



# SINGLE-DETACHED LUXURY HOMES

[RIDGEVIEWHOMES.COM](http://RIDGEVIEWHOMES.COM)





## BLOOM IN NATURE'S SIMPLICITY

Blue Springs provides a refreshing outlook to modern living while incorporating elements of nostalgia.

Proximity to major highways and regional roads allows for a convenient day-to-day travel experience, while arrival at home reassures tranquility.

Beautiful nature trails and thriving green spaces, Blue Springs provides the opportunity for families to connect with their environment - to grow, and to prosper.

Modern living with natural appeal, only at Blue Springs!

[View Location >](#)

[View Site Map >](#)

[View Design Collection >](#)

[Schedule an Appointment >](#)

[Visit ridgeviewhomes.com/bluesprings >](https://ridgeviewhomes.com/bluesprings)





## WELCOME TO BLUE SPRINGS

To some it is simply a roof with four walls, a place to sleep at night and a shelter from the elements. To others, it is a haven of tranquillity, where love and relaxation flow through the living space.

Despite all differences, one thing holds true - a home is how you define it. It is the foundation for the beginning and end of each day. It is the place where dreams are inspired and loved ones are cherished. It is the place to create memories and showcase accomplishments. It is where families come together to celebrate, eat, converse and live.

The heart of any Ridgeview Home is designed by its quality and modern amenities. No matter how you envision your Ridgeview Home, we always showcase the best of our home plans to help you choose your dream home.

Our expert team offers a diverse skill set to provide you with a superior home design, industry knowledge and the highest standard of customer service.

Welcome home.

**George Mouradian**  
C.E.T.  
President  
Ridgeview Homes





# STAYING CONNECTED

[View Blue Springs Location Online >](#)

Located on Lackner Boulevard south of Victoria Street, the long-awaited Blue Springs development is nearby miles of rich nature.

Surrounded by an established neighbourhood complete with recently built schools, premium local amenities, and close to major highways.

Blue Springs is where a balanced sustainable lifestyle is achieved.



**Close to  
schools**



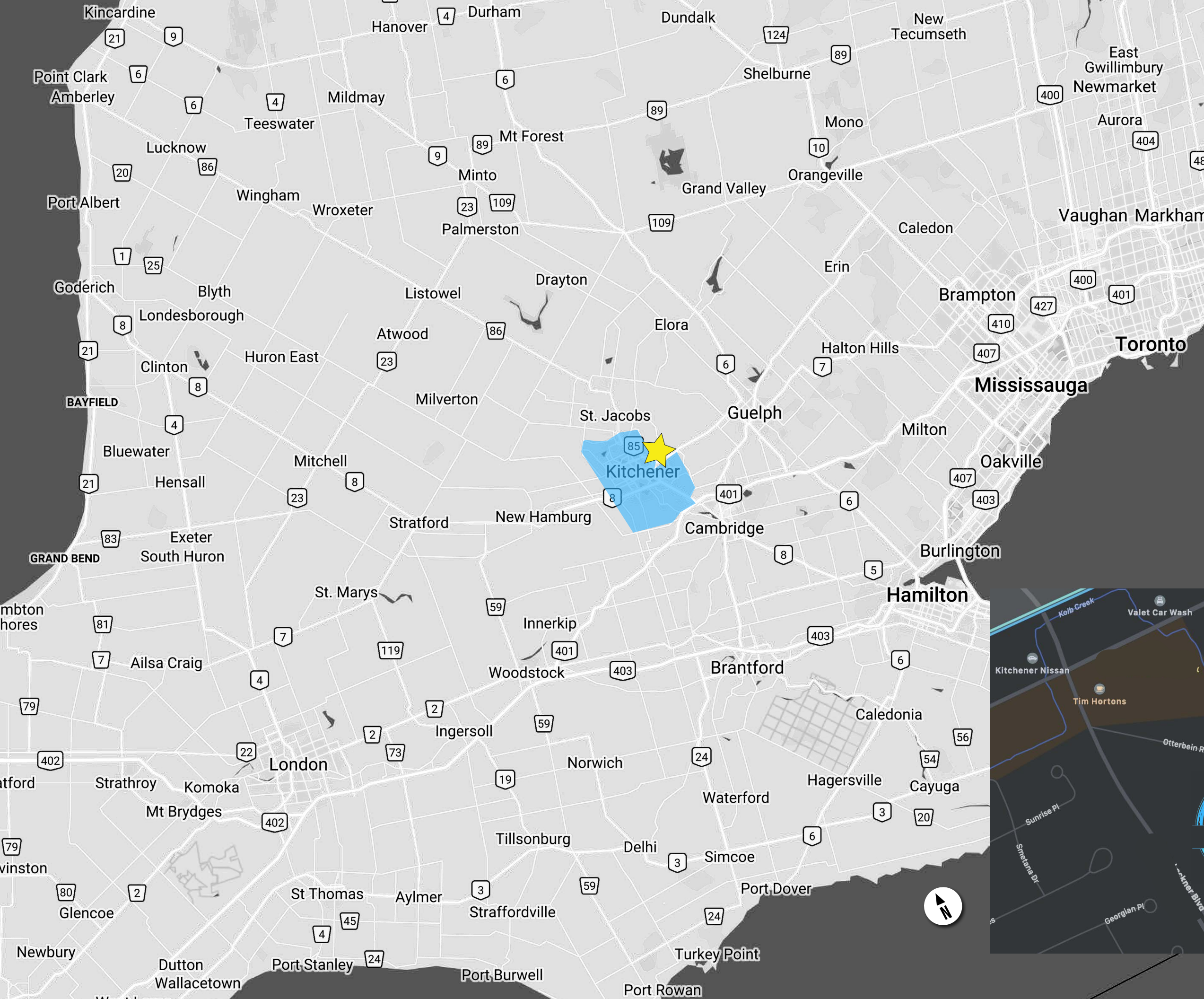
**Premium local  
amenities**



**Close to  
parks, trails**

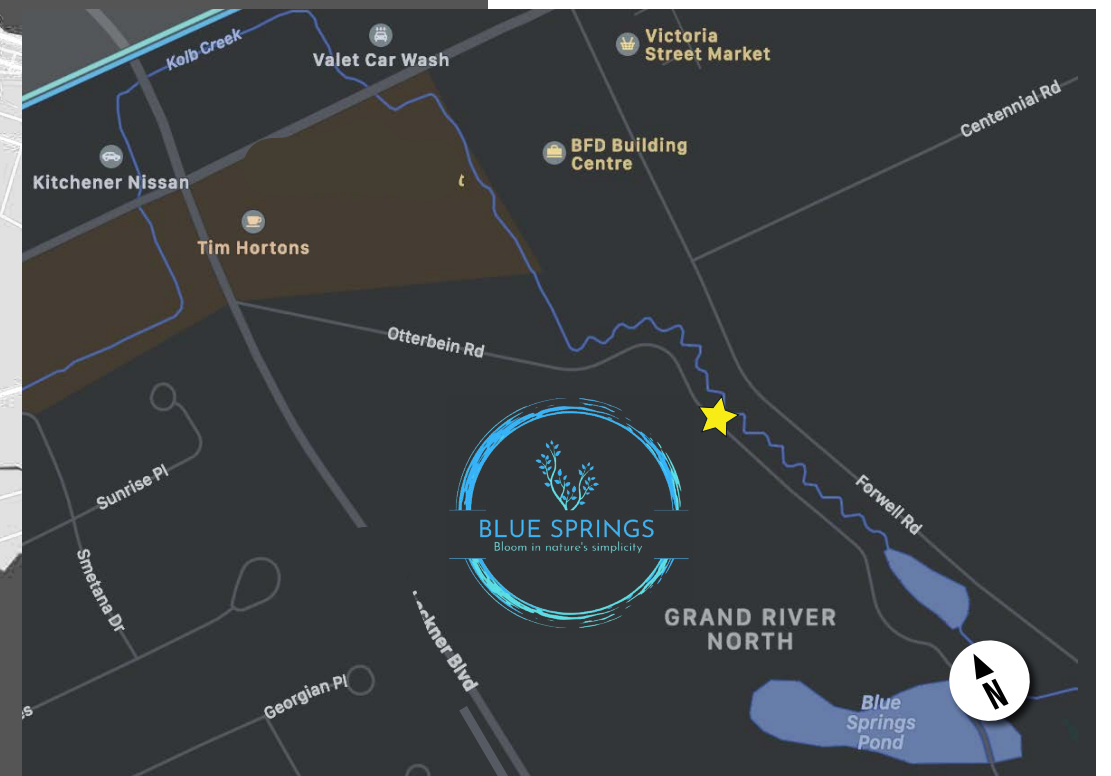
- 2** Minutes to HWY 7
- 7** Minutes to Conestoga Pkwy
- 9** Minutes to HWY 8
- 18** Minutes to HWY 401
- 12** Minutes to downtown Kitchener
- 13** Minutes to Fairview Park Mall
- 6** Minutes to Stanley Park
- 3** Minutes to Mackenzie King Public School





## LOCATION MAP

Blue Springs is centrally located in the Grand River North area of Kitchener. Easy accessible to Guelph, Waterloo, Cambridge, HWY 7, HWY 8, HWY 401 and other major highways.







# SITEMAP

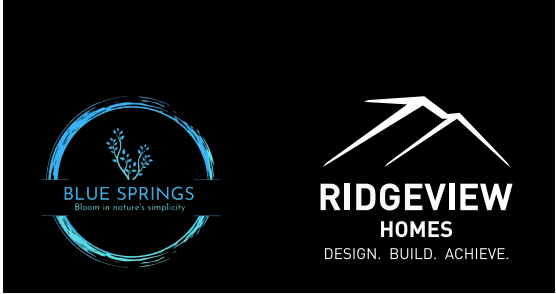
-  **MODEL**
-  **SPEC HOME**
-  **SOLD**
-  **CONDITIONAL OFFER**
- WO WALK-OUT BASEMENT**
- LO LOOK-OUT BASEMENT**

Prices, plans, elevations, grading, steps, dimensions, specifications/information and square footage are subject to change without any notice. Some features shown may be optional and available at an extra cost. Drawings are artist & designer's concept only and are subject to change as per offer, final selections and any adjustment required by OBC & City building/zoning departments. E. & O.E. 2021 Ridgeview Homes. All rights reserved. 20 October 2021.



# THOUGHTFULLY DESIGNED COLLECTION

Spacious, luxurios and elegantly designed. Each design is available in two options - Urban Farmhouse and Modern.



**THE  
CARDINAL**  
1,870 SQ.FT.  
3 BED



**THE  
DOVE**  
2,355 SQ.FT.  
3 BED

**THE  
ORIOLE**  
2,075 SQ.FT.  
3 BED



**THE  
SPARROW**  
2,450 SQ.FT.  
3 - 4 BED

**THE  
WREN**  
2,220 SQ.FT.  
4 BED



**THE  
ROBIN**  
2,850 SQ.FT.  
4 - 5 BED

Prices, plans, elevations, information, dimensions & specifications are subject to change without notice. Some features shown may be optional and available at an extra cost. Square footage may vary without notice. Drawings are artists concept only and are subject to change as per offer and final selections. E. & O.E. ©2020 Ridgeview Homes. All rights reserved. 15 DEC 2020.





# THE CARDINAL

Urban Farmhouse



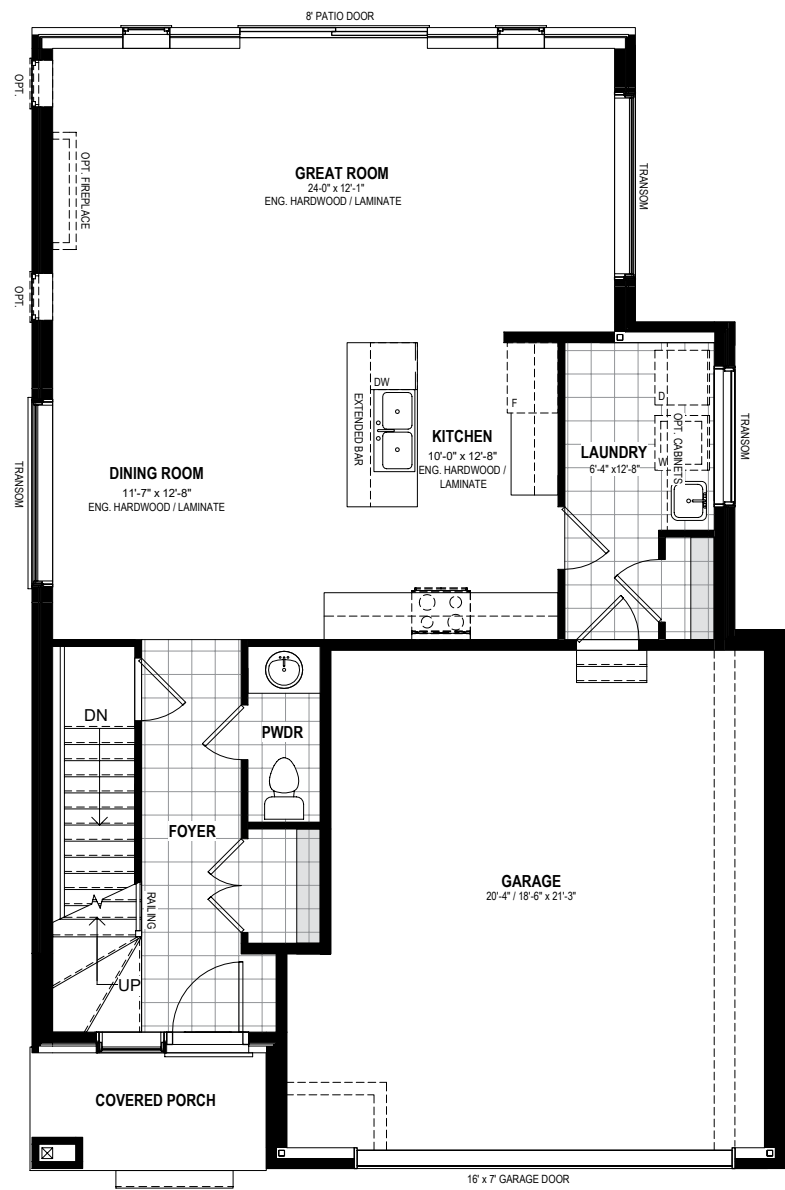
1,870 SQ.FT.



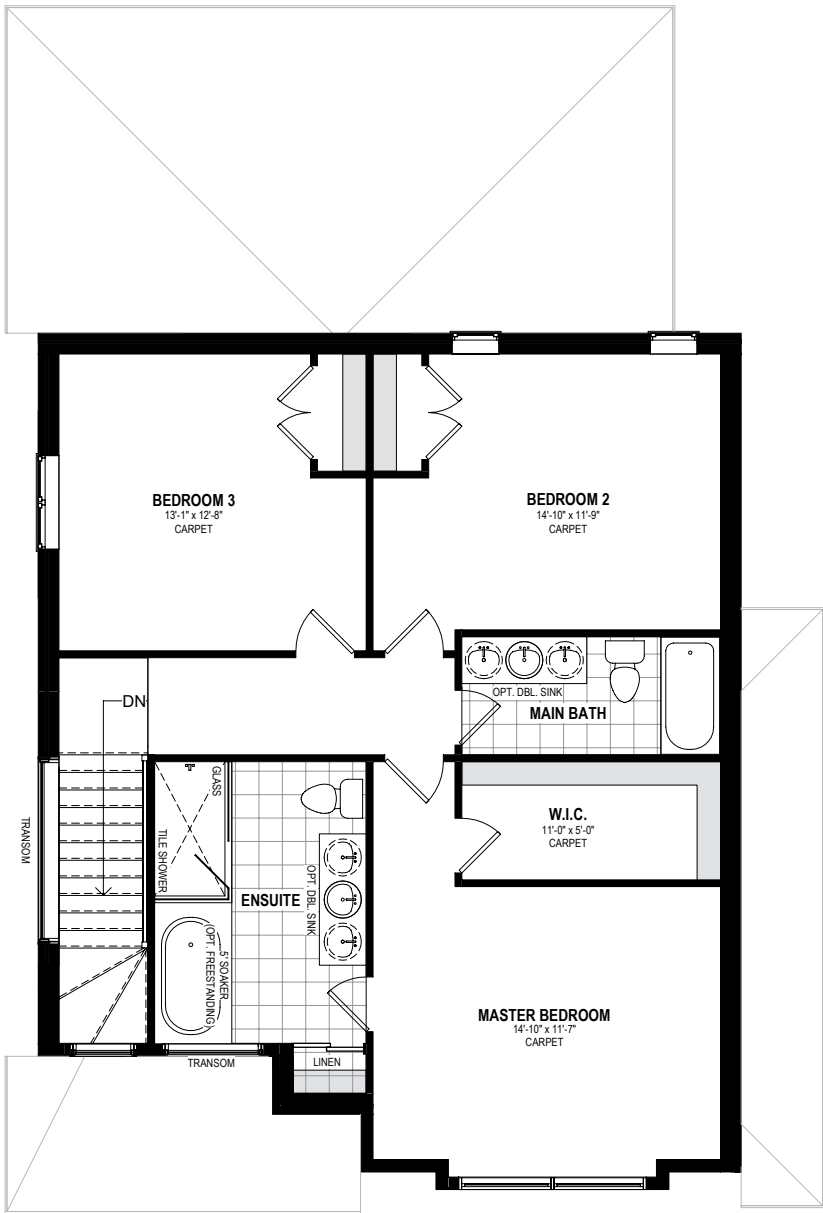
3 BED



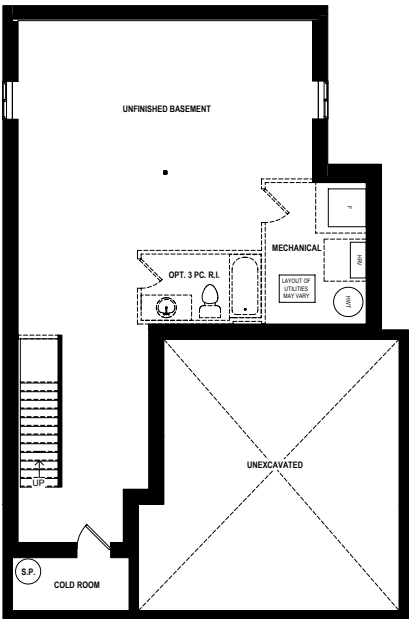
2.5 BATH



MAIN FLOOR



SECOND FLOOR



BASEMENT

Urban Farmhouse | THE CARDINAL

Prices, plans, elevations, grading, steps, dimensions, specifications/information and square footage are subject to change without any notice. Some features shown may be optional and available at an extra cost. Drawings are artist & designer's concept only and are subject to change as per offer, final selections and any adjustment required by OBC & City building/zoning departments. E. & O.E. 2021 Ridgeview Homes. All rights reserved. 28.JAN.2021.





# THE CARDINAL

Modern



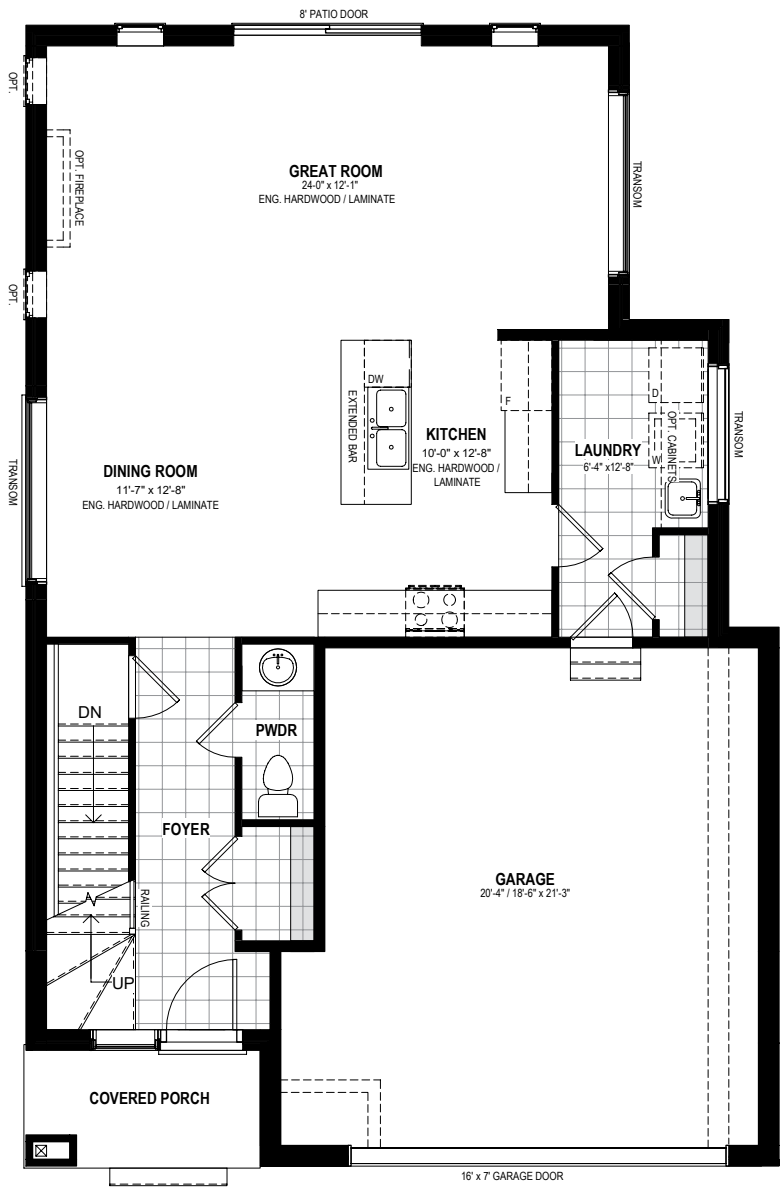
1,870 SQ.FT.



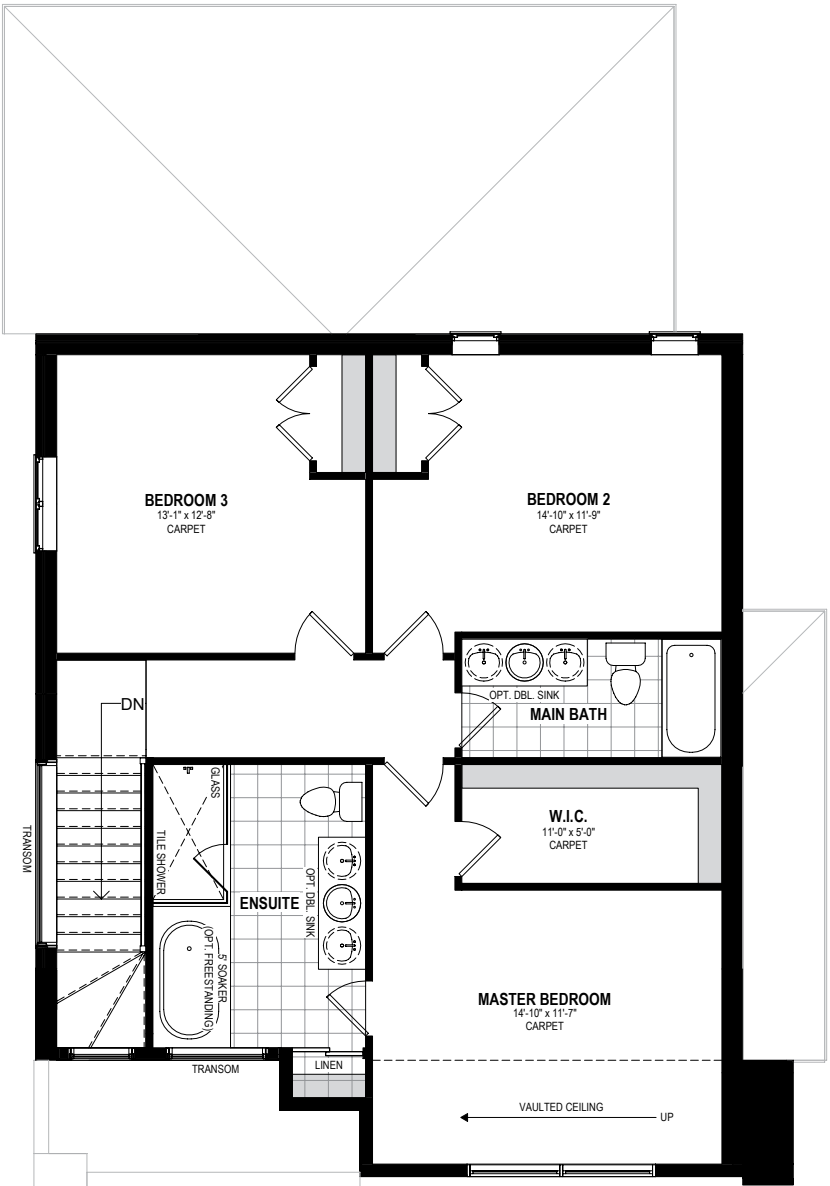
3 BED



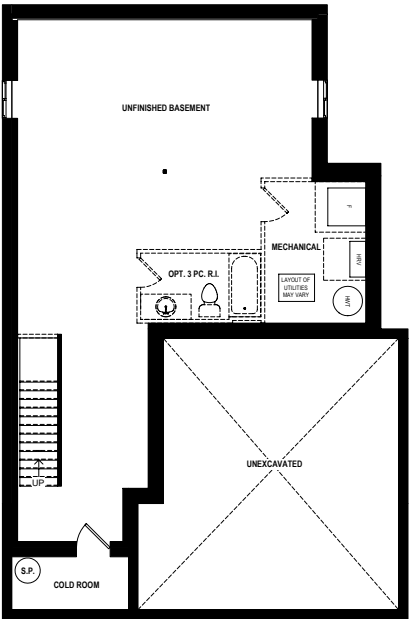
2.5 BATH



MAIN FLOOR



SECOND FLOOR



BASEMENT

Modern | THE CARDINAL

Prices, plans, elevations, grading, steps, dimensions, specifications/information and square footage are subject to change without any notice. Some features shown may be optional and available at an extra cost. Drawings are artist & designer's concept only and are subject to change as per offer, final selections and any adjustment required by OBC & City building/zoning departments. E. & O.E. 2021 Ridgeview Homes. All rights reserved. 28.JAN.2021.



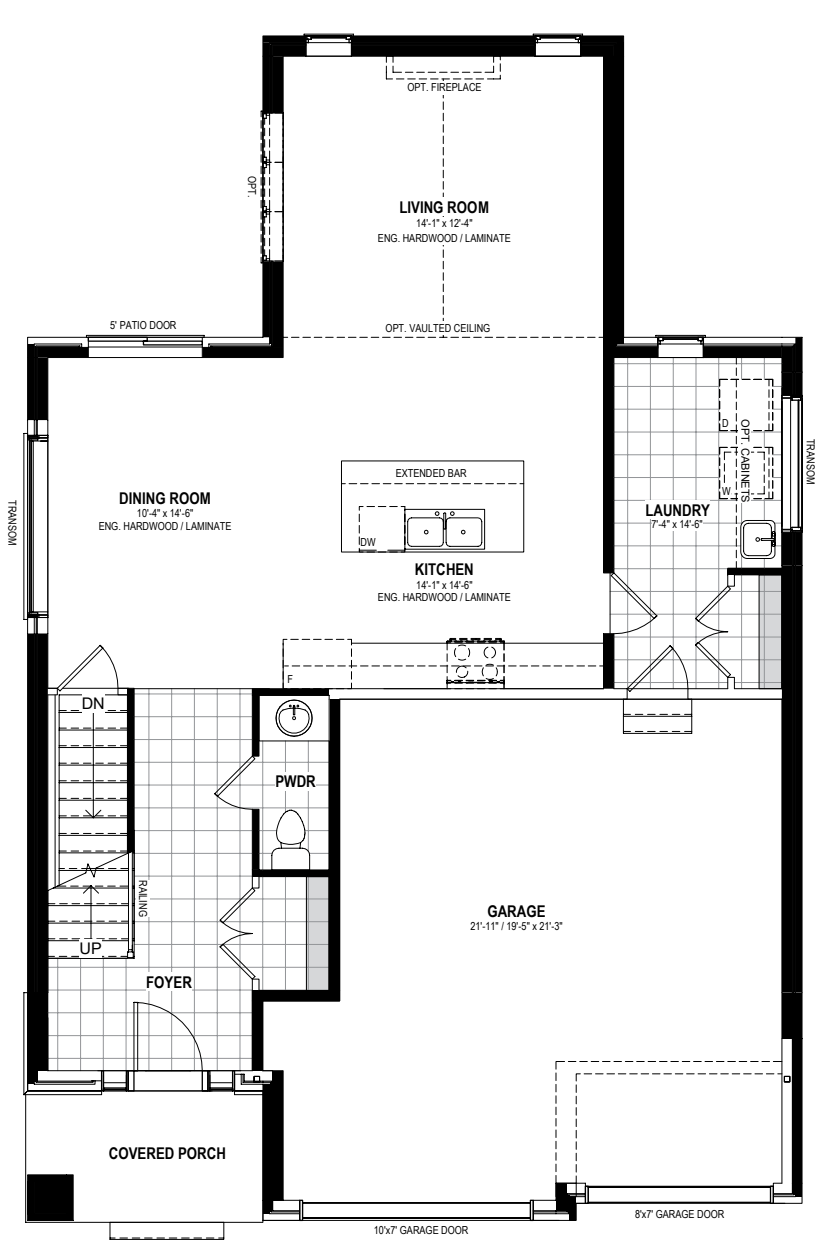


# THE ORIOLE

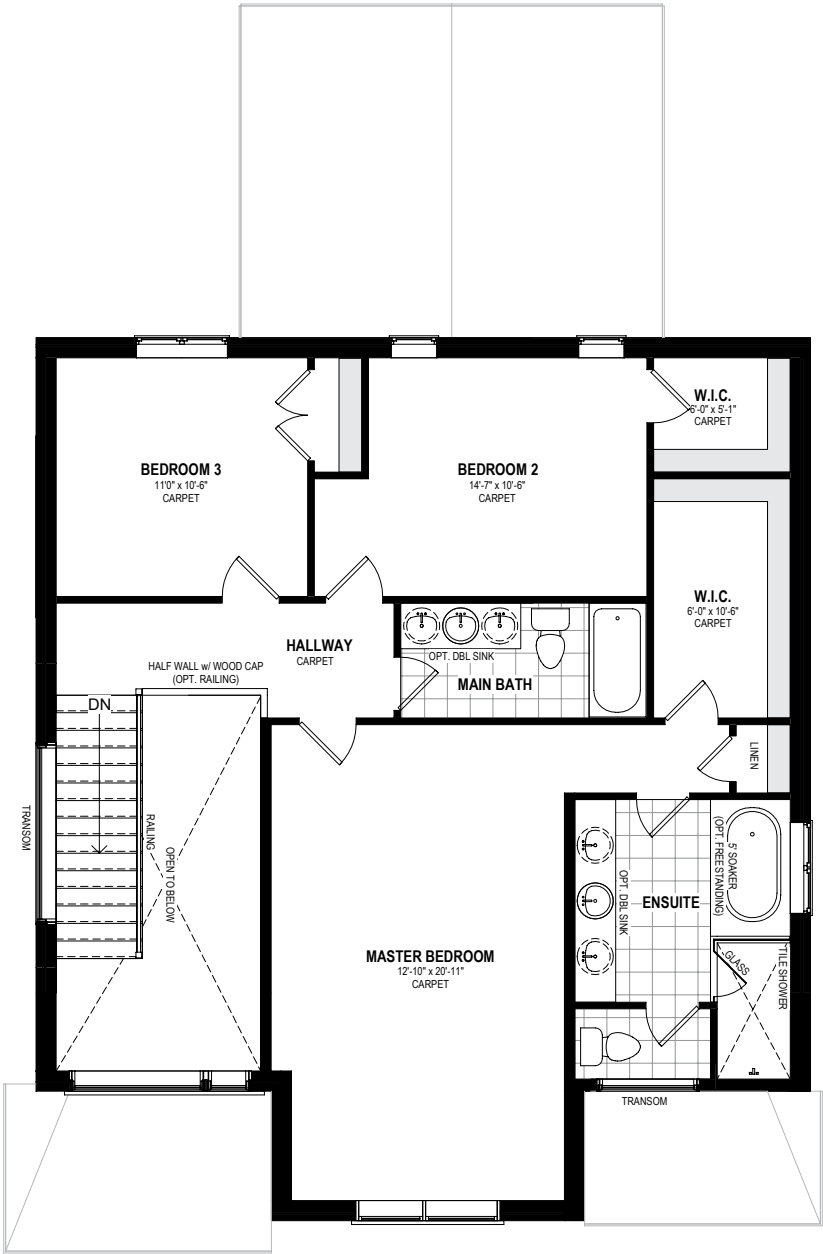
Urban Farmhouse



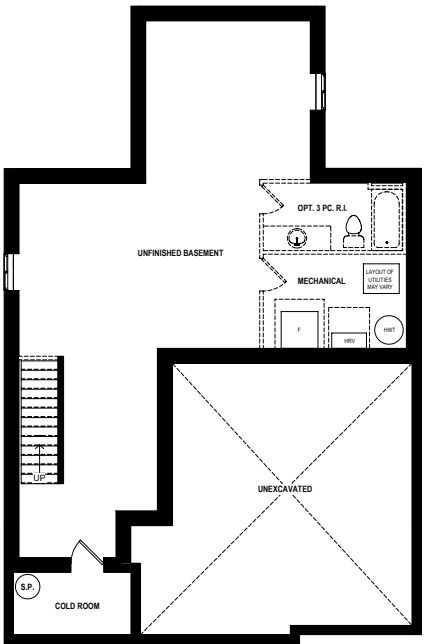
- 2,075 SQ.FT.
- 3 BED
- 2.5 BATH



MAIN FLOOR



SECOND FLOOR



BASEMENT

Urban Farmhouse | THE ORIOLE

Prices, plans, elevations, grading, steps, dimensions, specifications/information and square footage are subject to change without any notice. Some features shown may be optional and available at an extra cost. Drawings are artist & designer's concept only and are subject to change as per offer, final selections and any adjustment required by OBC & City building/zoning departments. E. & O.E. 2021 Ridgeview Homes. All rights reserved. 28.JAN.2021.



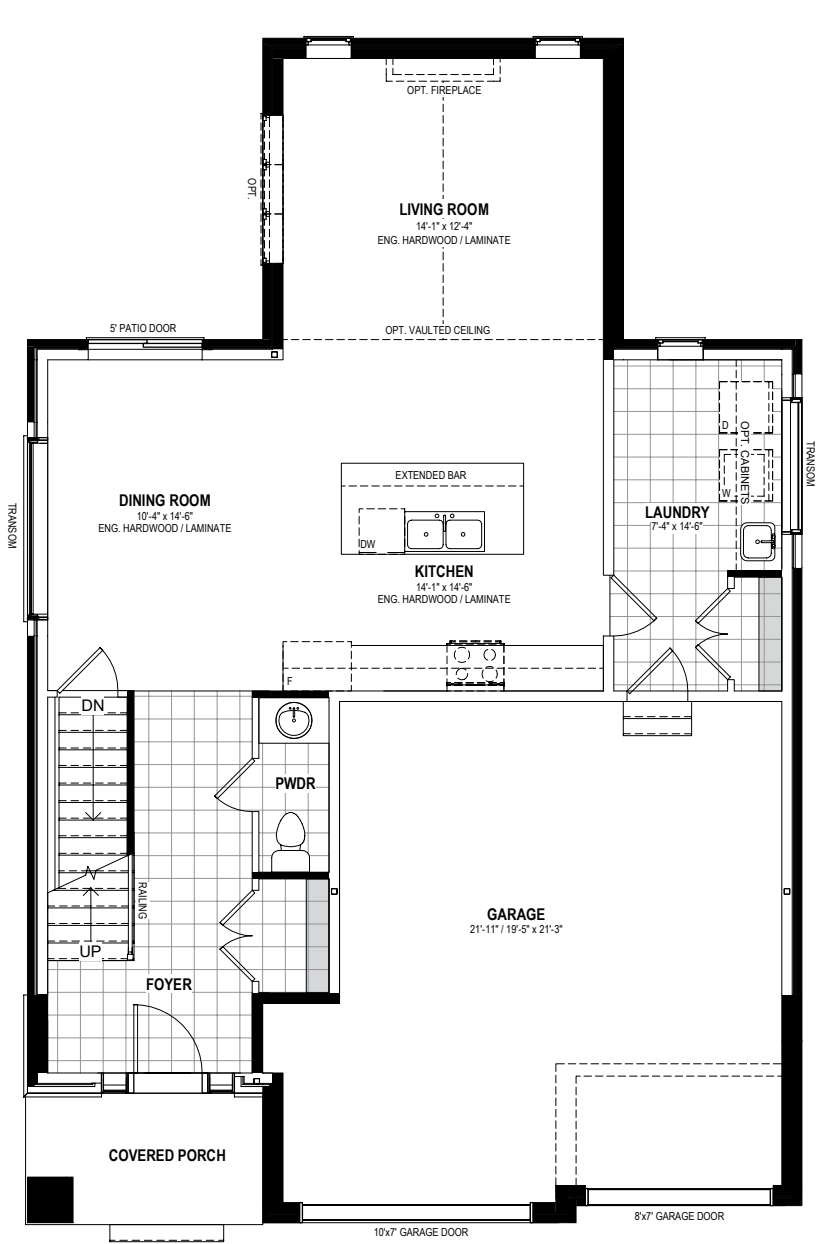


# THE ORIOLE

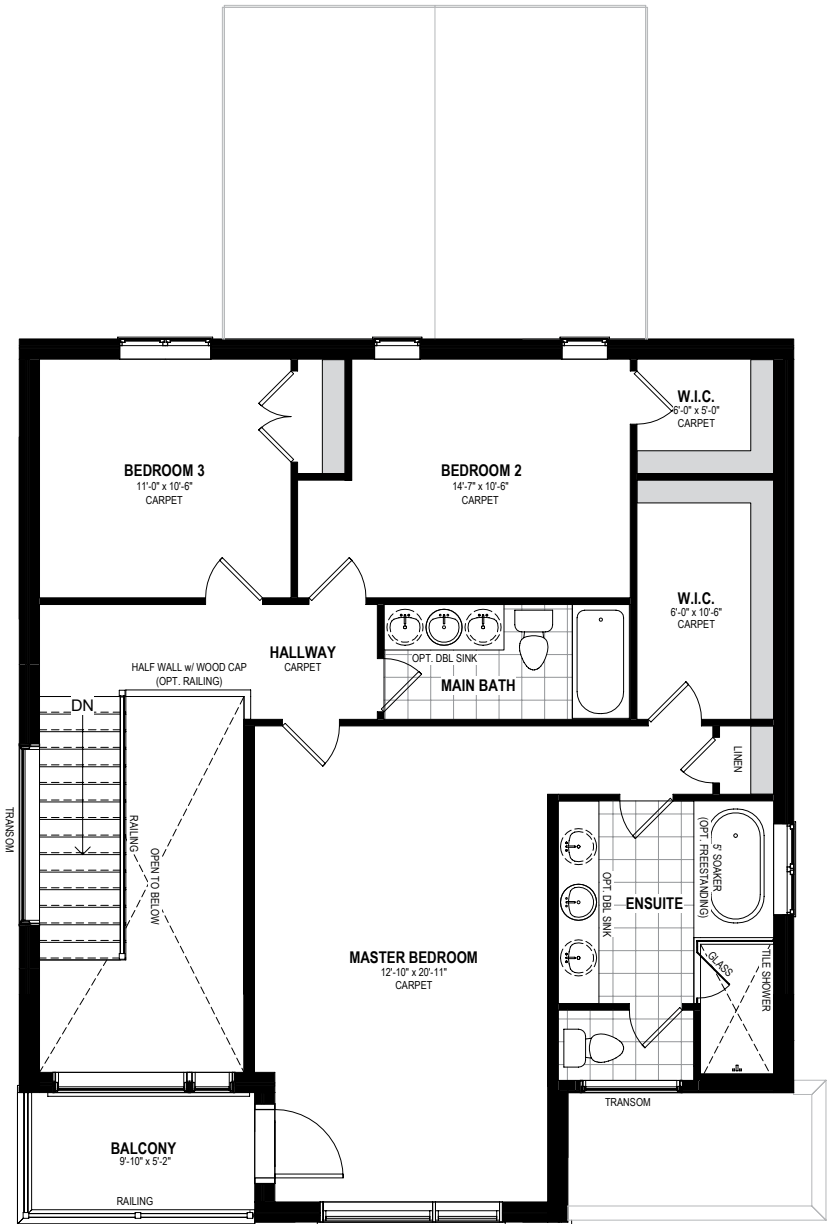
Modern



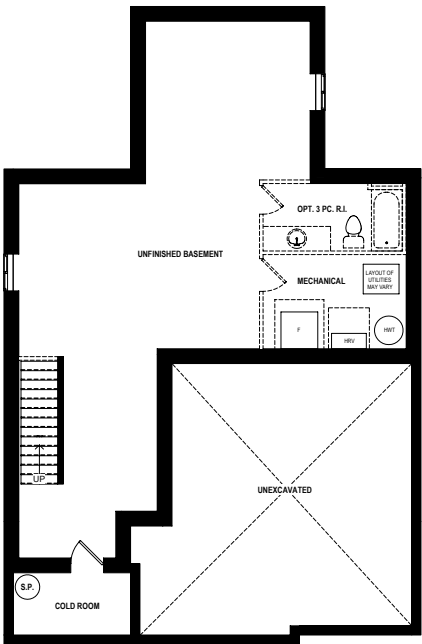
- 2,075 SQ.FT.
- 3 BED
- 2.5 BATH



MAIN FLOOR



SECOND FLOOR



BASEMENT

Modern | THE ORIOLE

Prices, plans, elevations, grading, steps, dimensions, specifications/information and square footage are subject to change without any notice. Some features shown may be optional and available at an extra cost. Drawings are artist & designer's concept only and are subject to change as per offer, final selections and any adjustment required by OBC & City building/zoning departments. E. & O.E. 2021 Ridgeview Homes. All rights reserved. 28 JAN. 2021.





# THE WREN

Urban Farmhouse



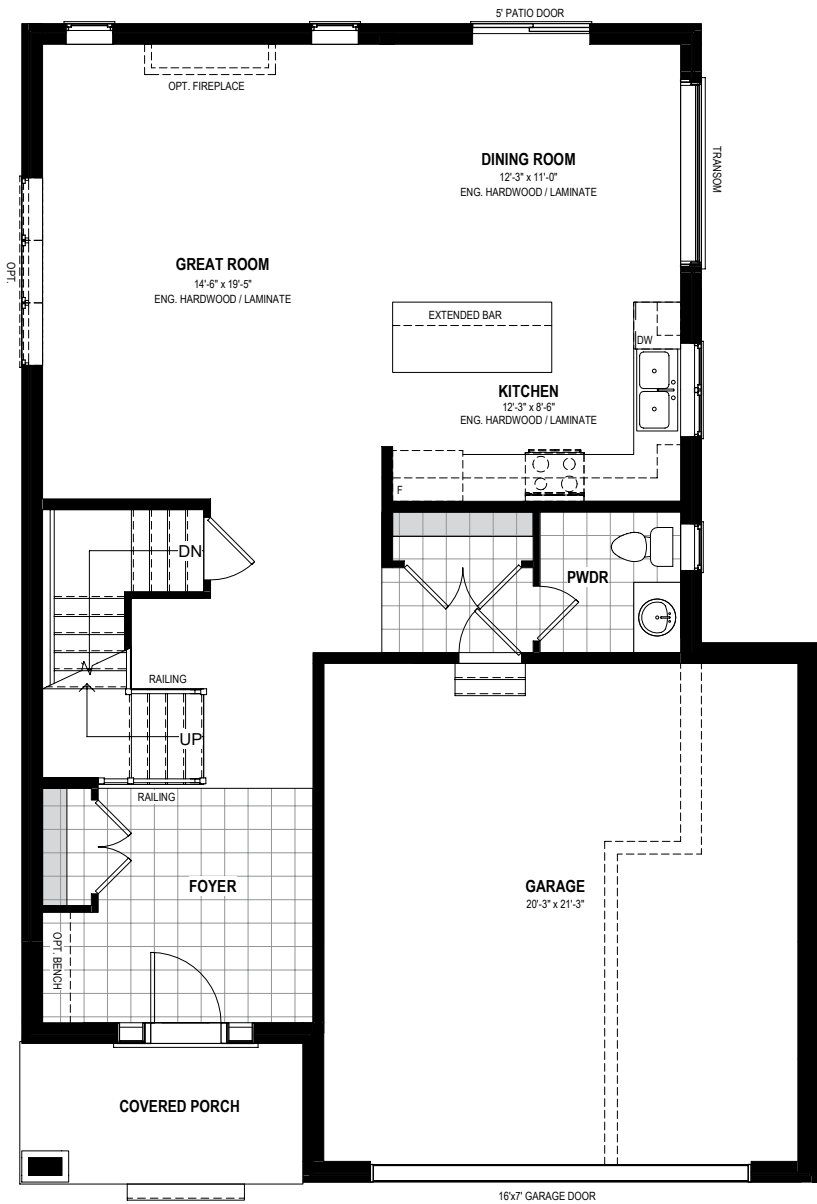
2,220 SQ.FT.



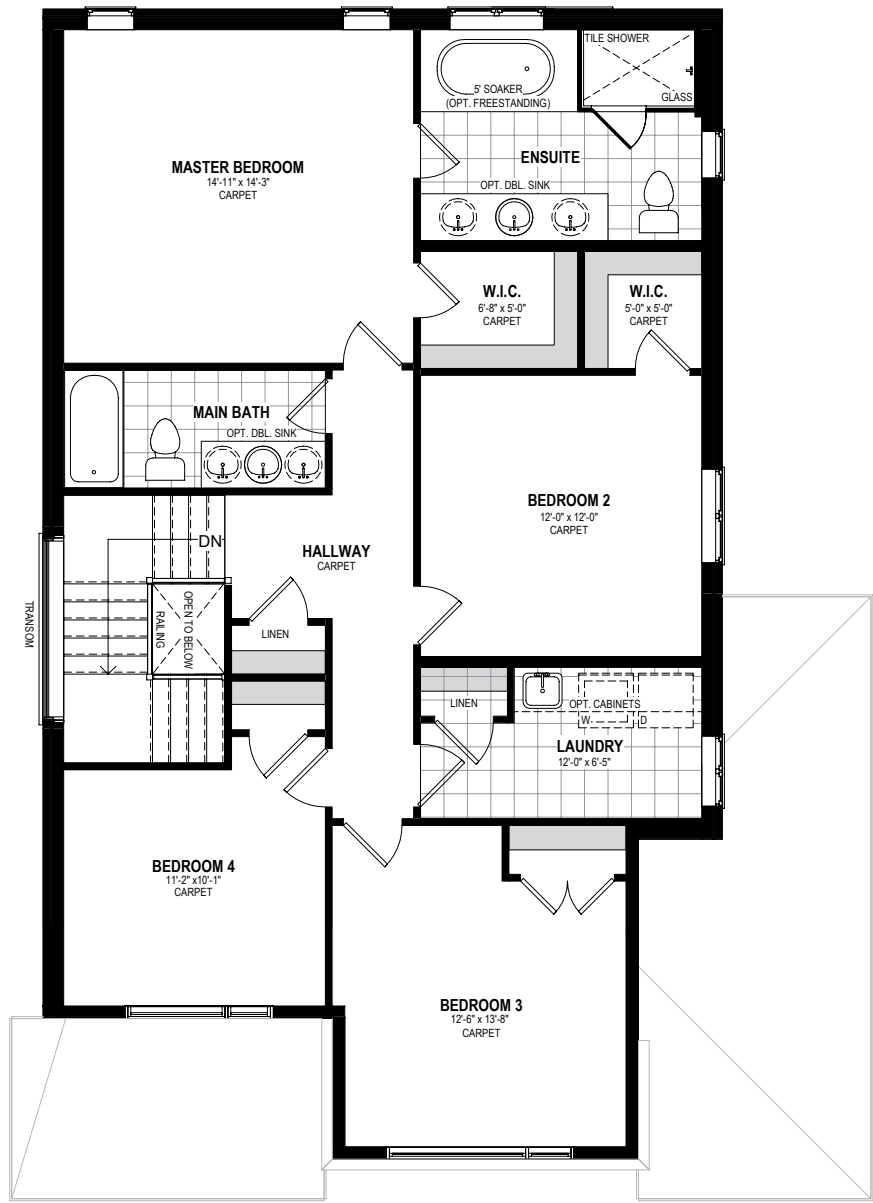
4 BED



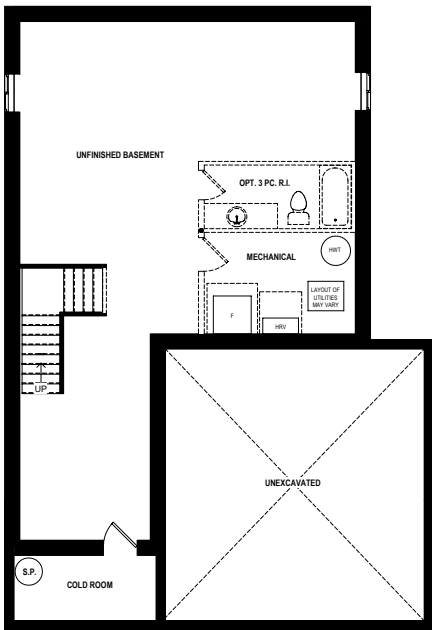
2.5 BATH



MAIN FLOOR



SECOND FLOOR



BASEMENT

Urban Farmhouse | THE WREN

Prices, plans, elevations, grading, steps, dimensions, specifications/information and square footage are subject to change without any notice. Some features shown may be optional and available at an extra cost. Drawings are artist & designer's concept only and are subject to change as per offer, final selections and any adjustment required by OBC & City building/zoning departments. E. & O.E. 2021 Ridgeview Homes. All rights reserved. 28.JAN.2021.



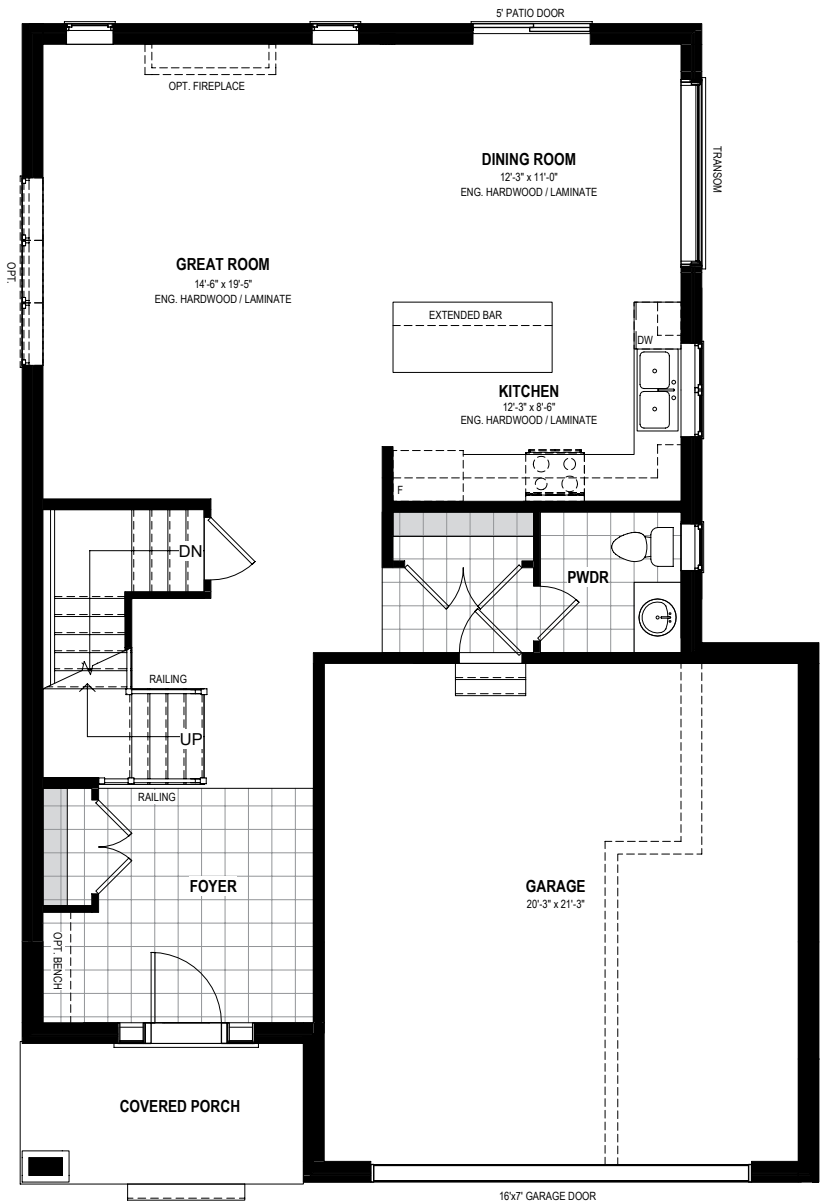


# THE WREN

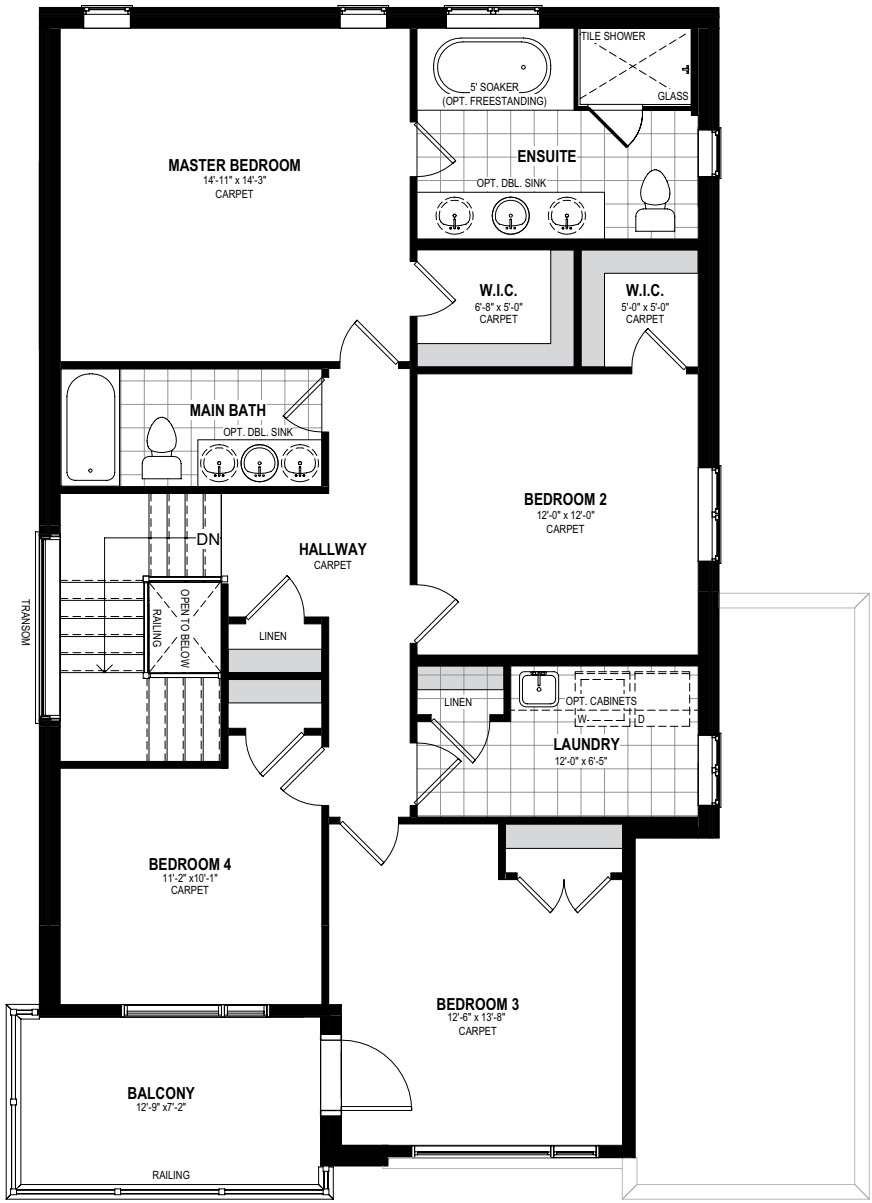
Modern



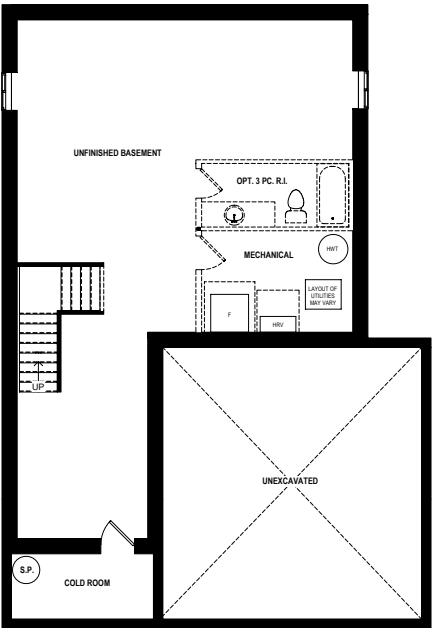
- 2,220 SQ.FT.
- 4 BED
- 2.5 BATH



MAIN FLOOR



SECOND FLOOR

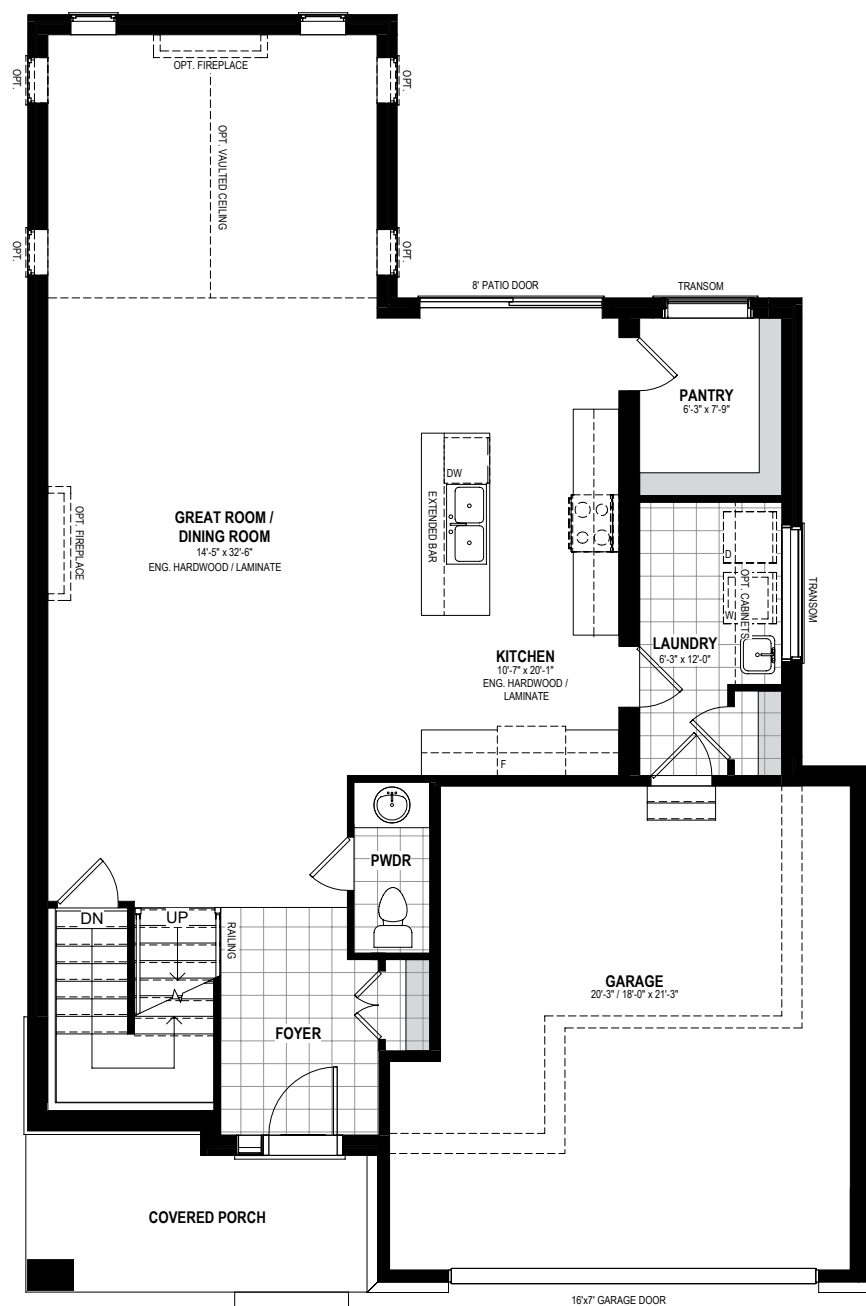


BASEMENT

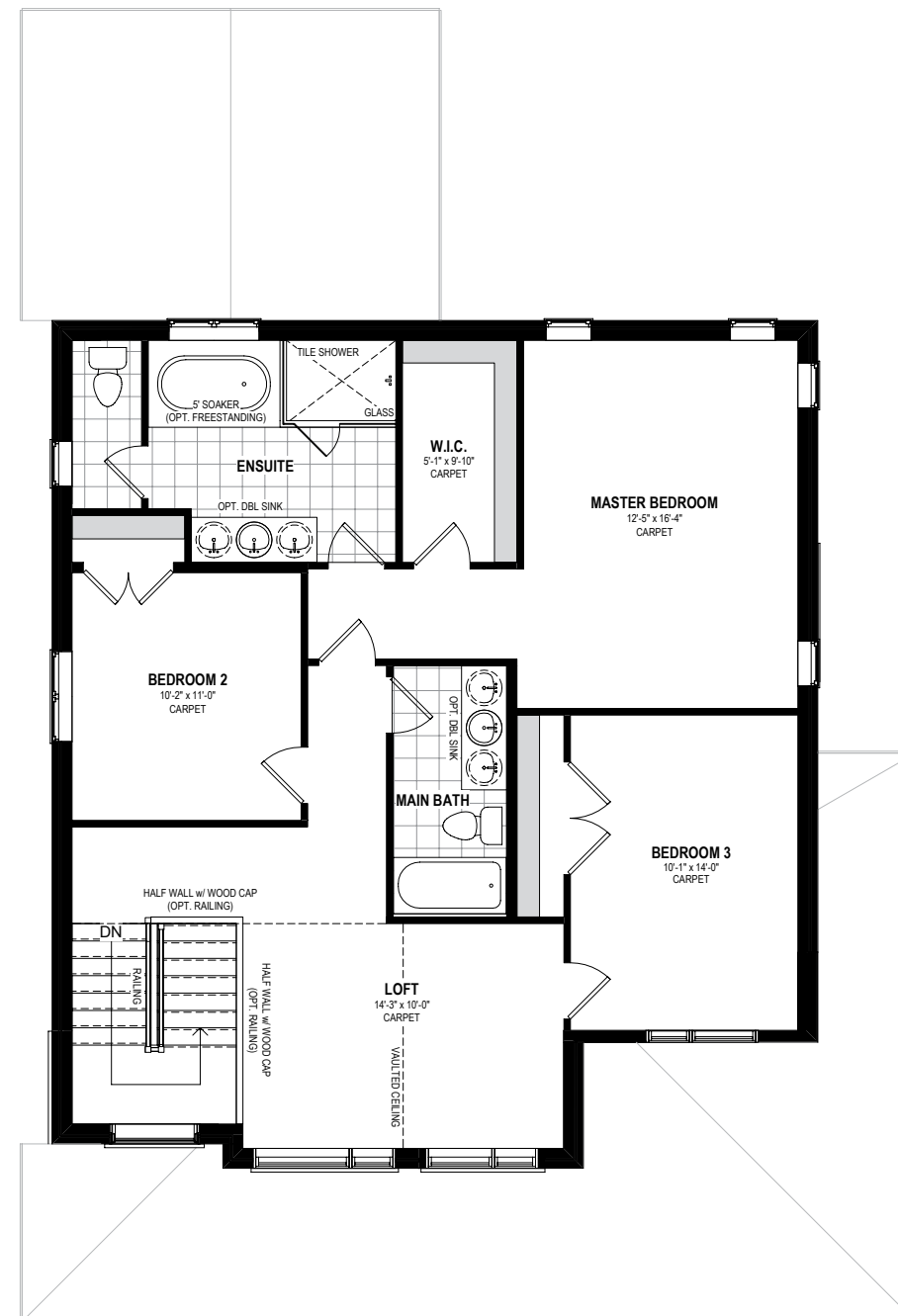
Modern | THE WREN

Prices, plans, elevations, grading, steps, dimensions, specifications/information and square footage are subject to change without any notice. Some features shown may be optional and available at an extra cost. Drawings are artist & designer's concept only and are subject to change as per offer, final selections and any adjustment required by OBC & City building/zoning departments. E. & O.E. 2021 Ridgeview Homes. All rights reserved. 28.JAN.2021.

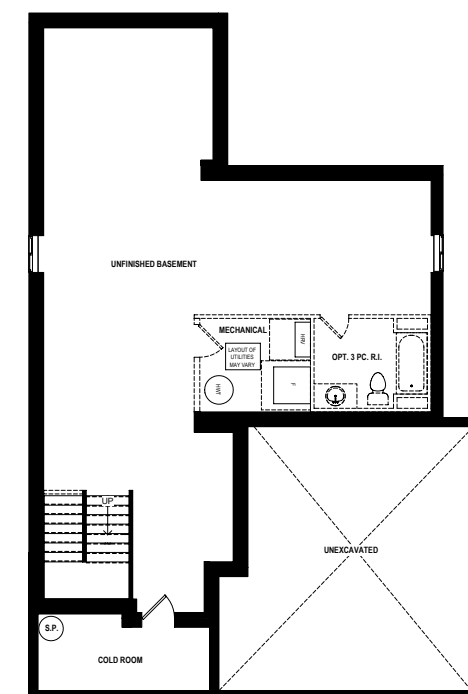




## MAIN FLOOR



## SECOND FLOOR



## BASEMENT

Urban Farmhouse | THE DOVE

Prices, plans, elevations, grading, steps, dimensions, specifications/information and square footage are subject to change without any notice. Some features shown may be optional and available at an extra cost. Drawings are artist & designer's concept only and are subject to change as per offer, final selections and any adjustment required by OBC & City building/zoning departments. E & O.E. 2021 Ridgeview Homes. All rights reserved. 28 JAN 2021



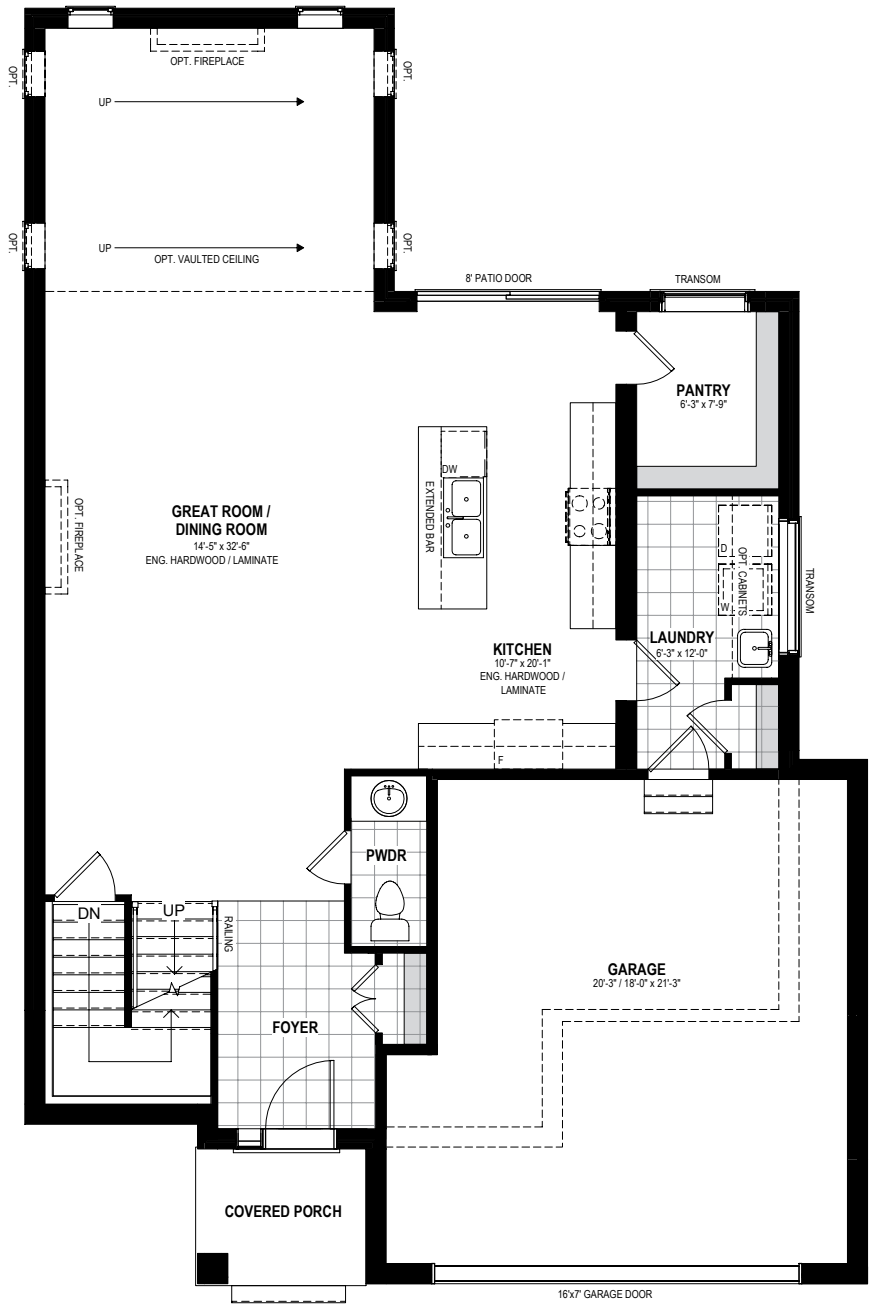


# THE DOVE

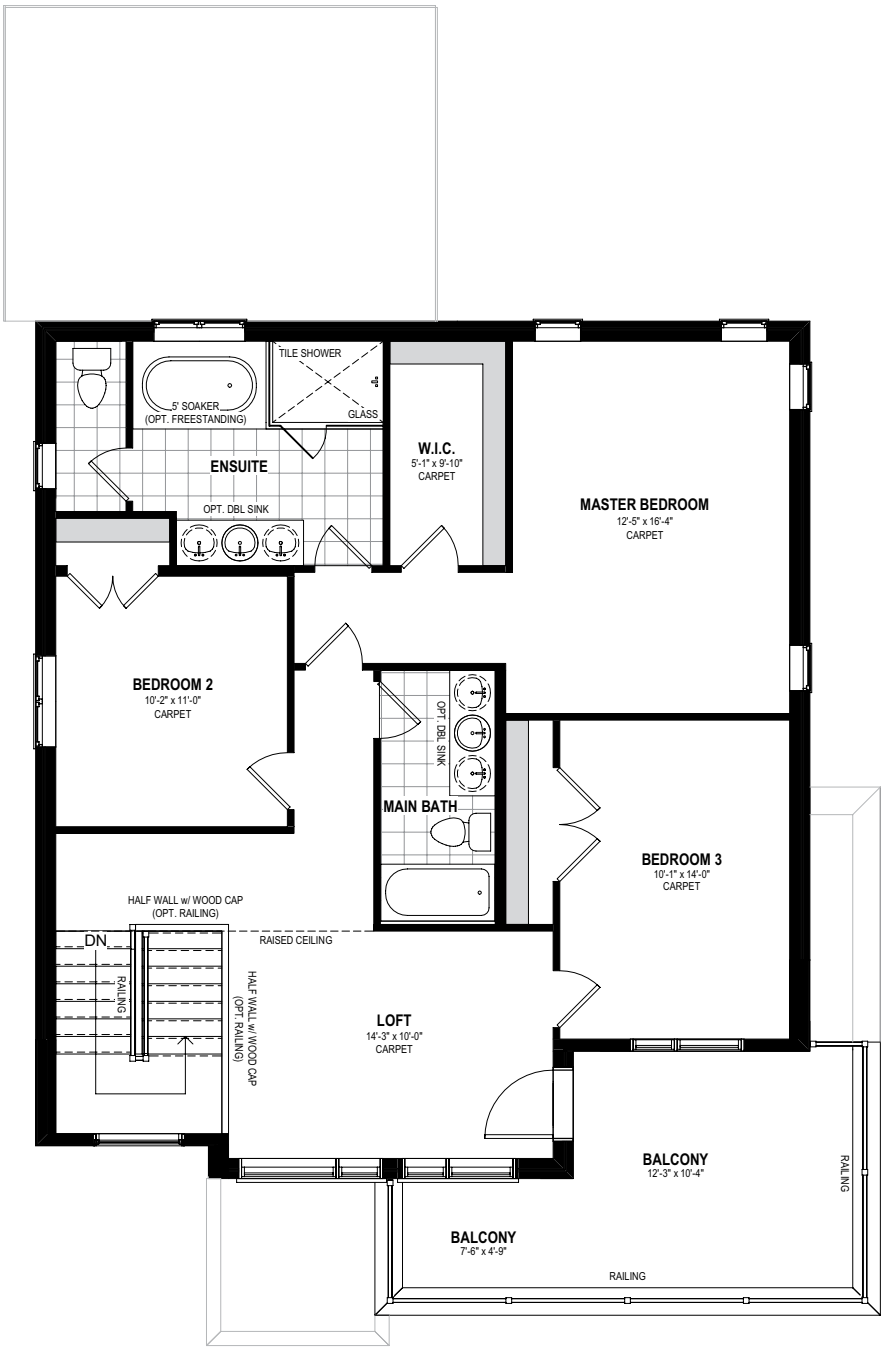
Modern



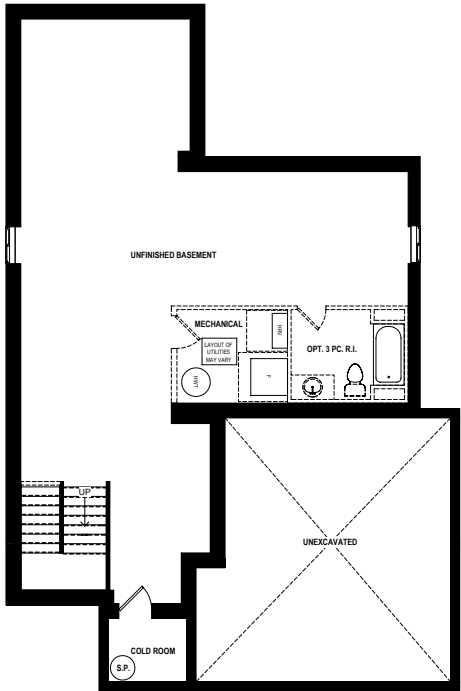
- 2,355 SQ.FT.
- 3 BED
- 2.5 BATH



MAIN FLOOR



SECOND FLOOR



BASEMENT

Modern | THE DOVE

Prices, plans, elevations, grading, steps, dimensions, specifications/information and square footage are subject to change without any notice. Some features shown may be optional and available at an extra cost. Drawings are artist & designer's concept only and are subject to change as per offer, final selections and any adjustment required by OBC & City building/zoning departments. E. & O.E. 2021 Ridgeview Homes. All rights reserved. 28.JAN.2021.



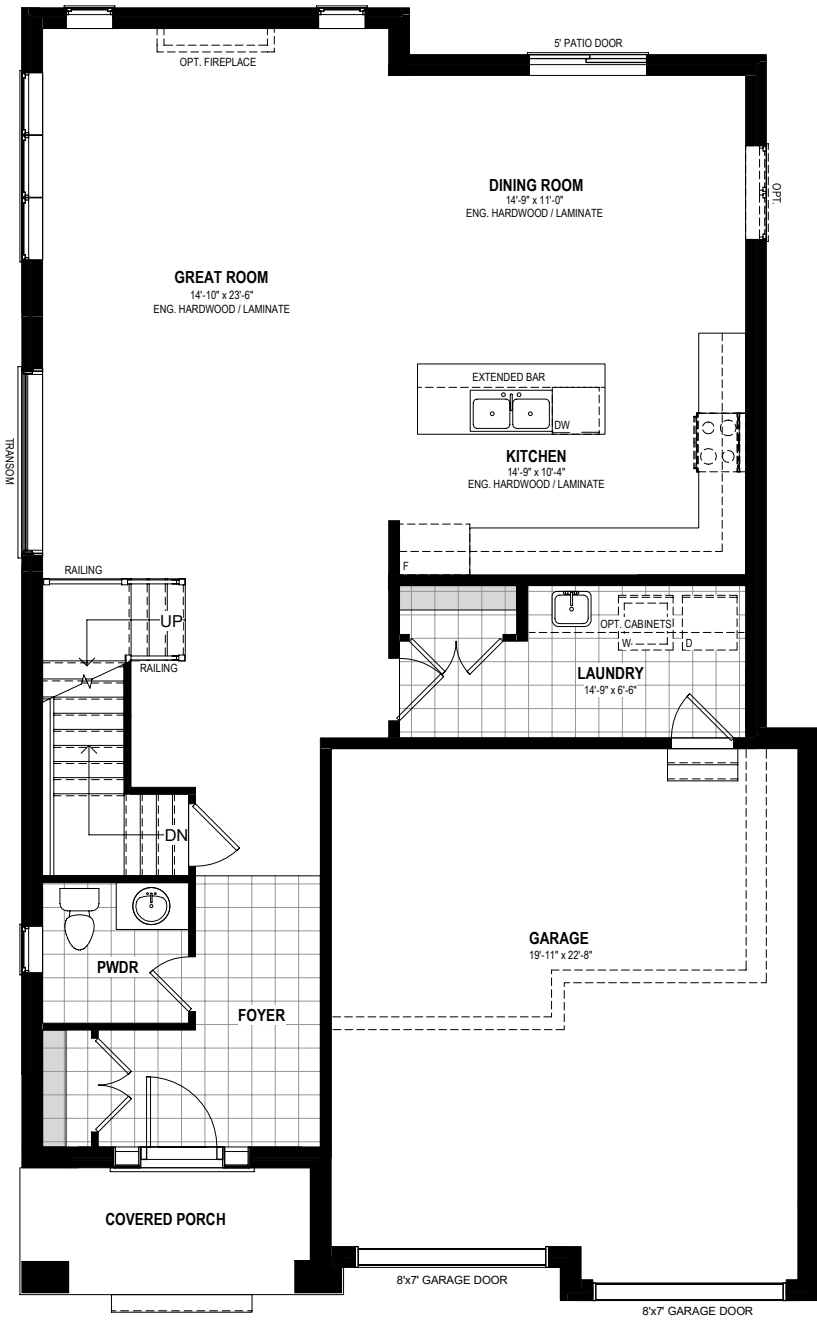


# THE SPARROW

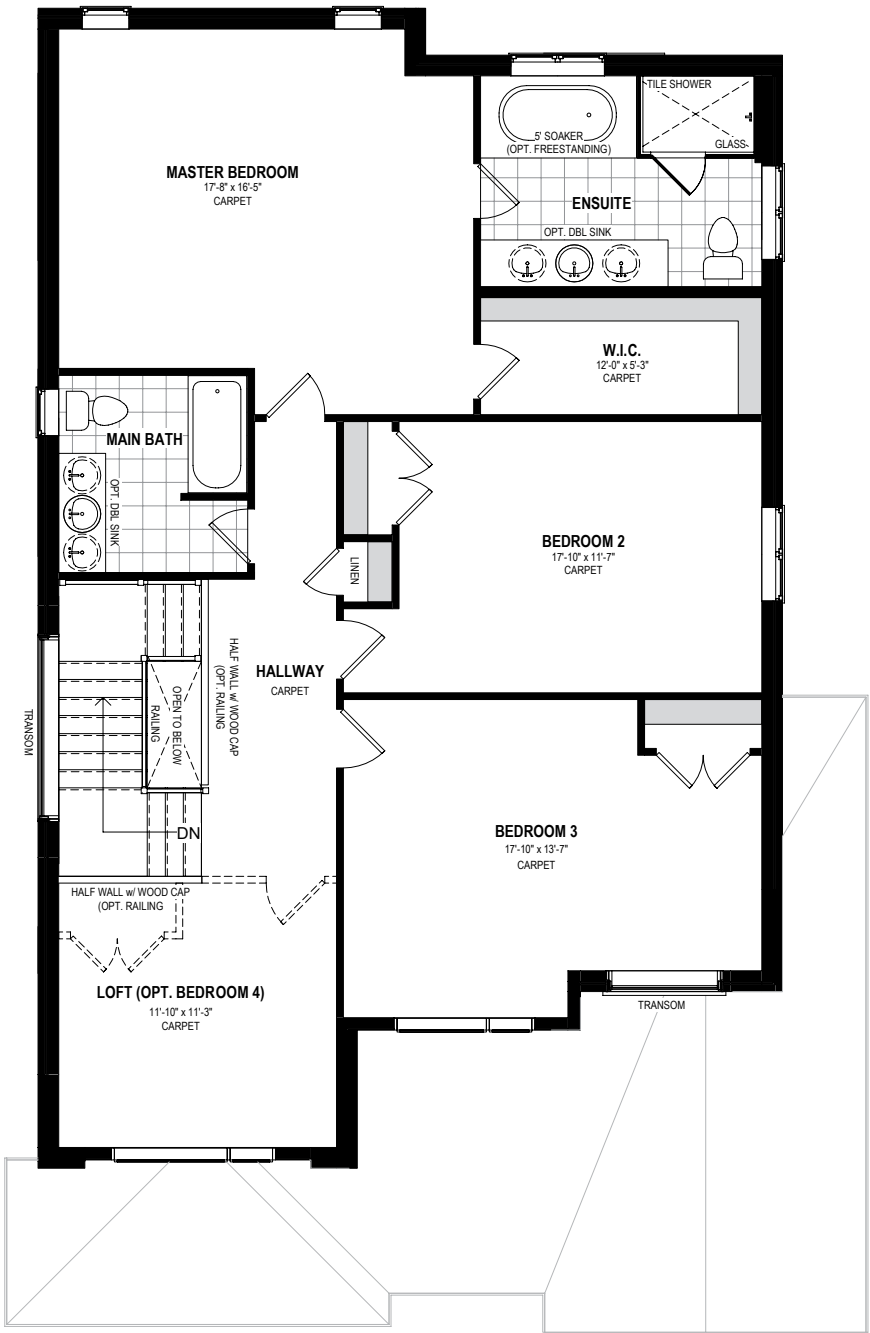
Urban Farmhouse



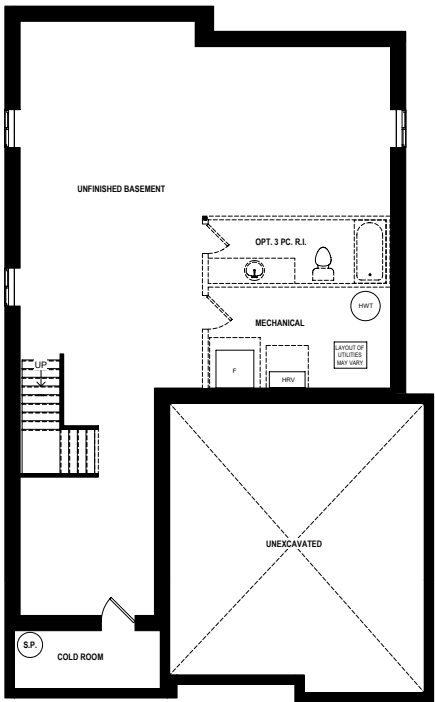
- 2,540 SQ.FT.
- 3 - 4 BED
- 2.5 BATH



MAIN FLOOR



SECOND FLOOR



BASEMENT

Urban Farmhouse | THE SPARROW

Prices, plans, elevations, grading, steps, dimensions, specifications/information and square footage are subject to change without any notice. Some features shown may be optional and available at an extra cost. Drawings are artist & designer's concept only and are subject to change as per offer, final selections and any adjustment required by OBC & City building/zoning departments. E. & O.E. 2021 Ridgeview Homes. All rights reserved. 28 JAN. 2021.

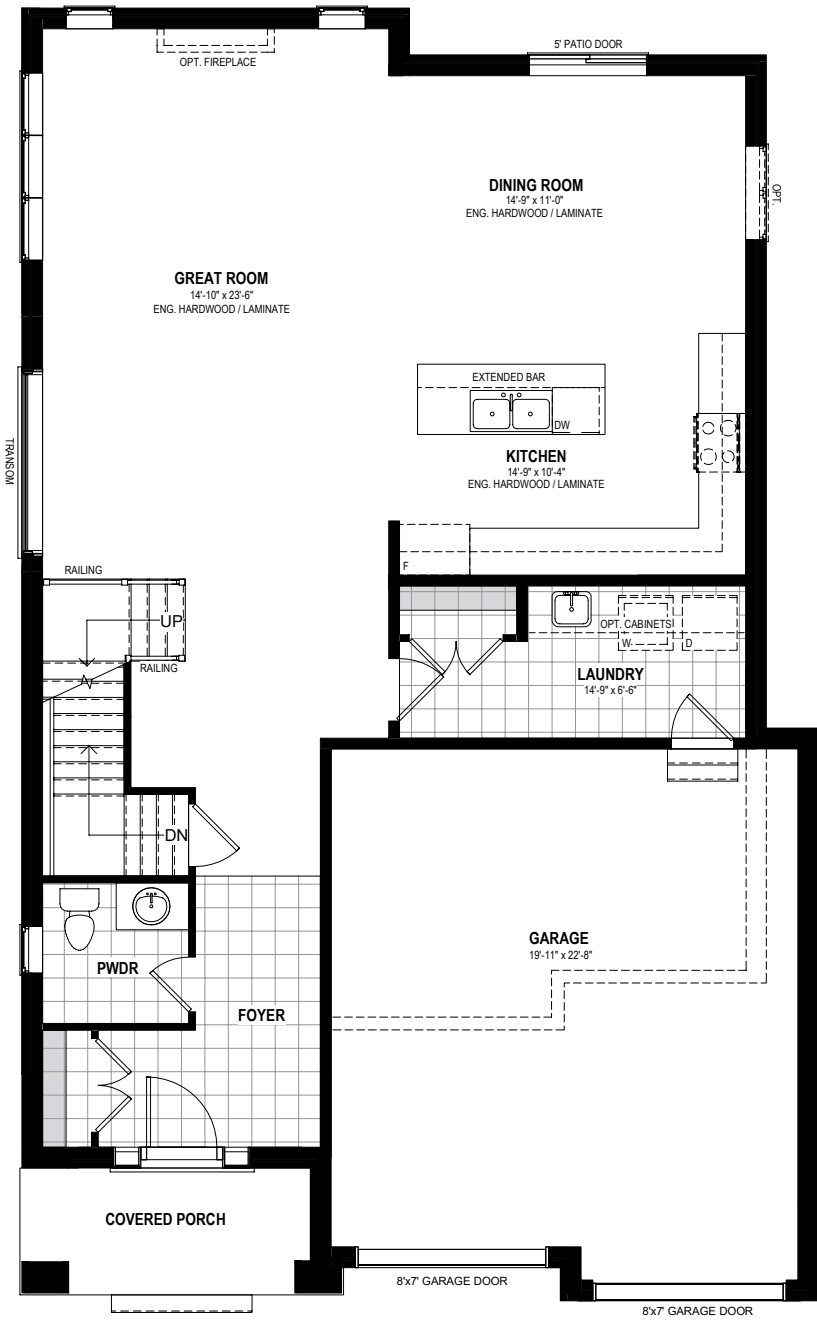


# THE SPARROW

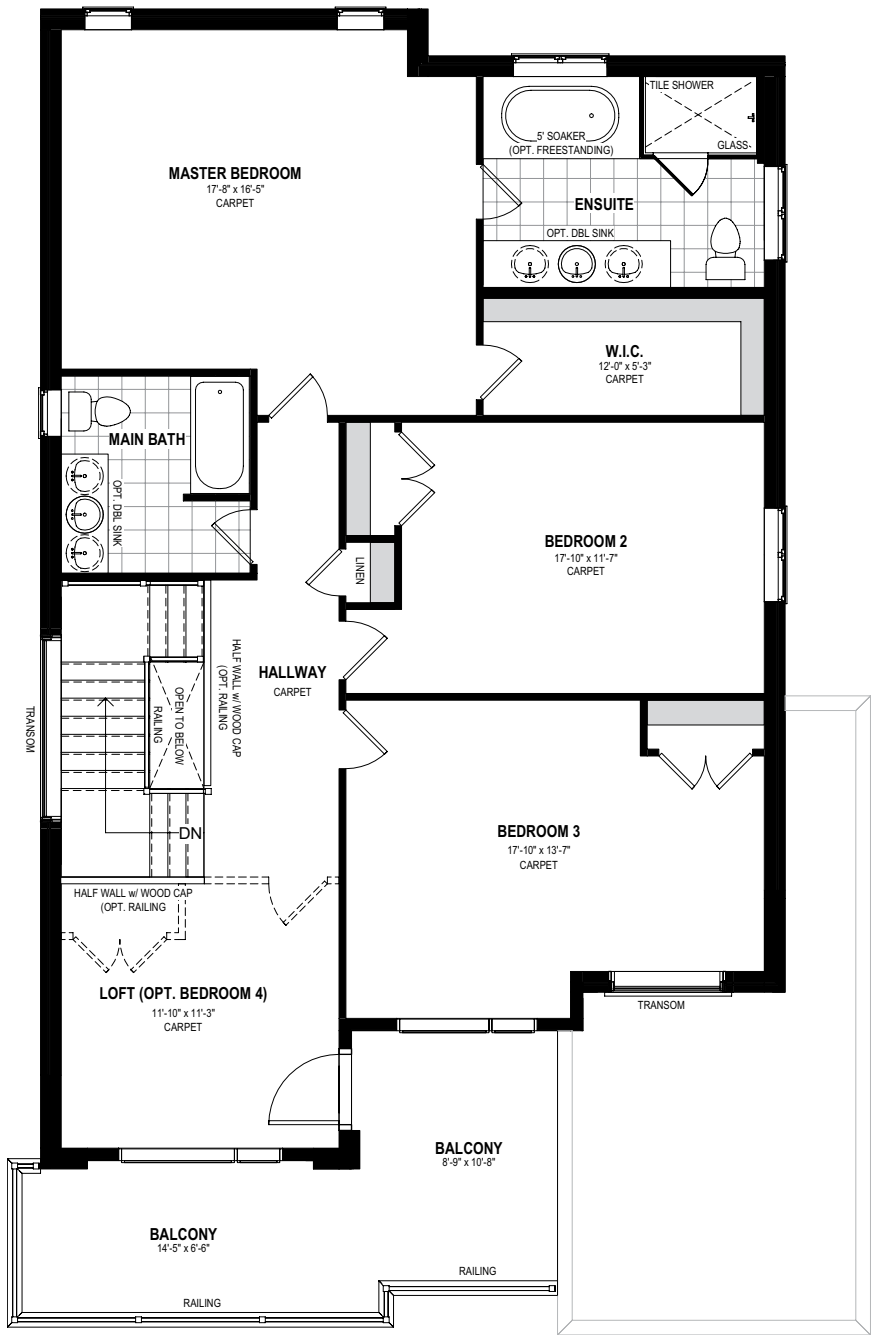
Modern



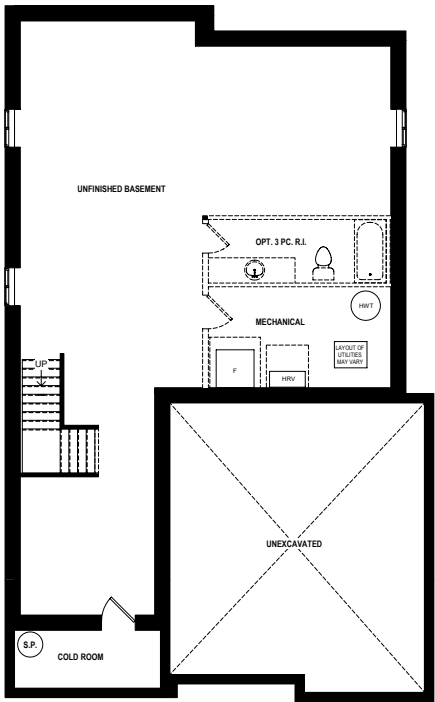
- 2,540 SQ.FT.
- 3 - 4 BED
- 2.5 BATH



MAIN FLOOR



SECOND FLOOR



BASEMENT

Modern | THE SPARROW

Prices, plans, elevations, grading, steps, dimensions, specifications/information and square footage are subject to change without any notice. Some features shown may be optional and available at an extra cost. Drawings are artist & designer's concept only and are subject to change as per offer, final selections and any adjustment required by OBC & City building/zoning departments. E. & O.E. 2021 Ridgeview Homes. All rights reserved. 28.JAN.2021.



Prices, plans, elevations, grading, steps, dimensions, specifications/information and square footage are subject to change without any notice. Some features shown may be optional and available at an extra cost. Drawings are artist & designer's concept only and are subject to change as per offer, final selections and any adjustment required by OBC & City building/zoning departments. E. & O.E. 2021 Redview Homes. All rights reserved. 28 JAN. 2021.

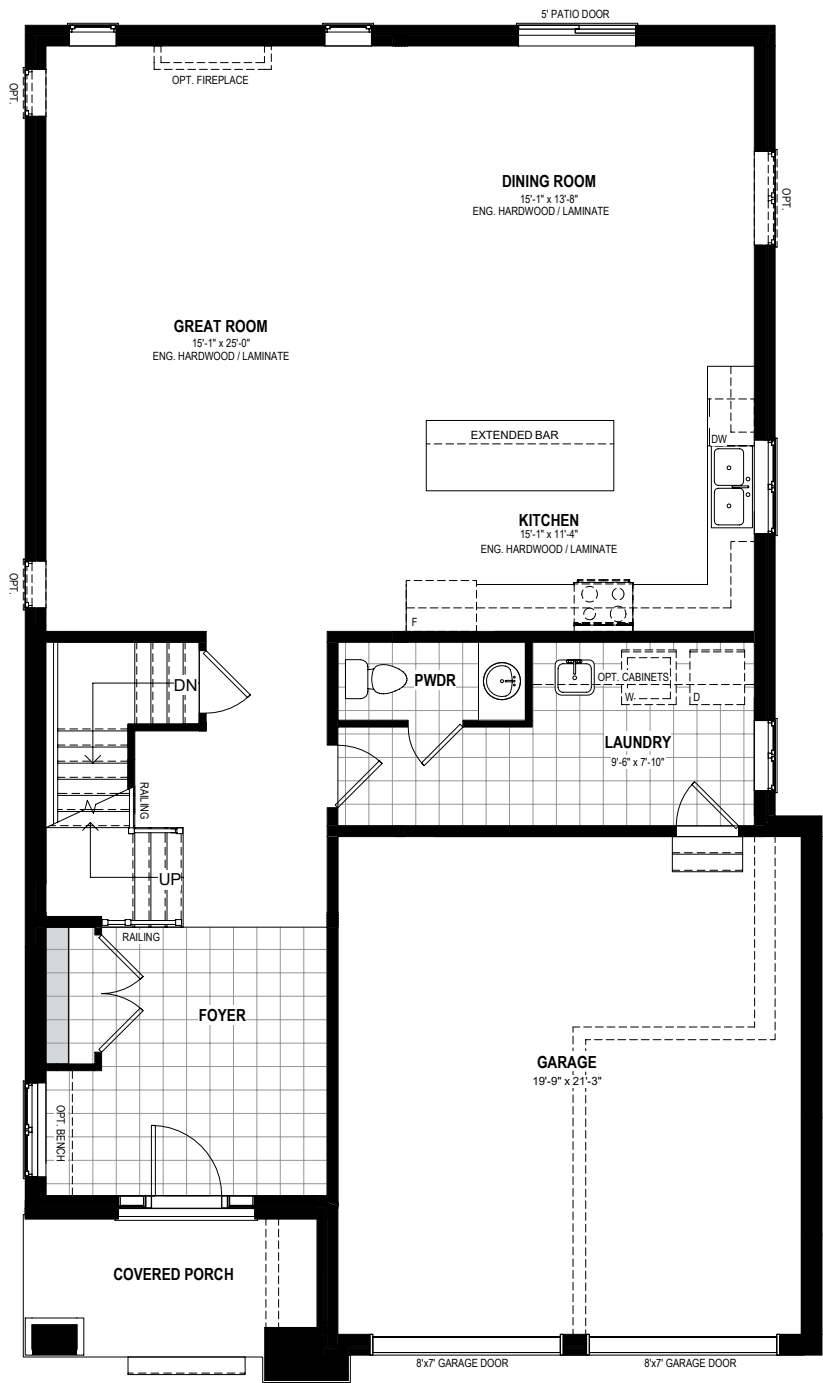


# THE ROBIN

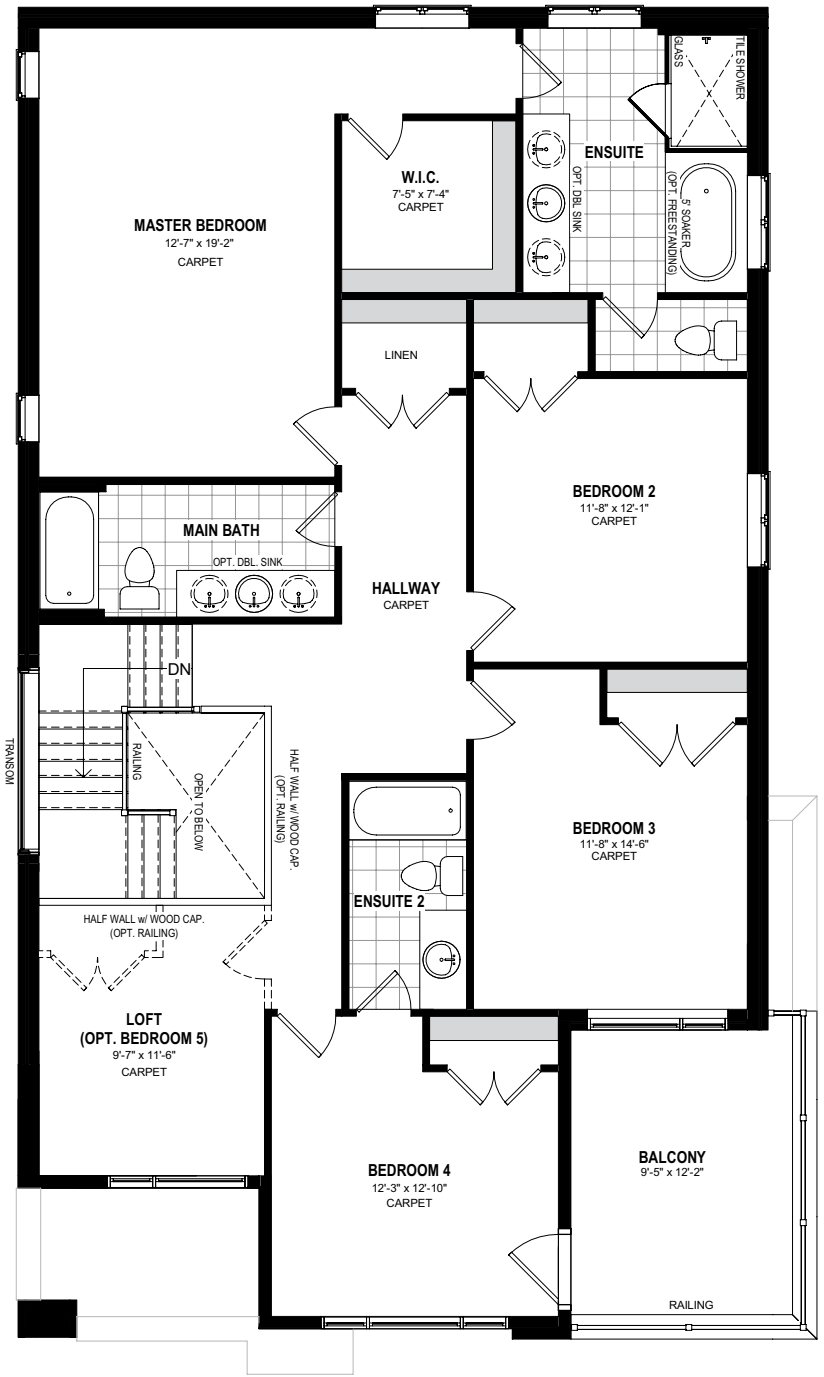
Modern



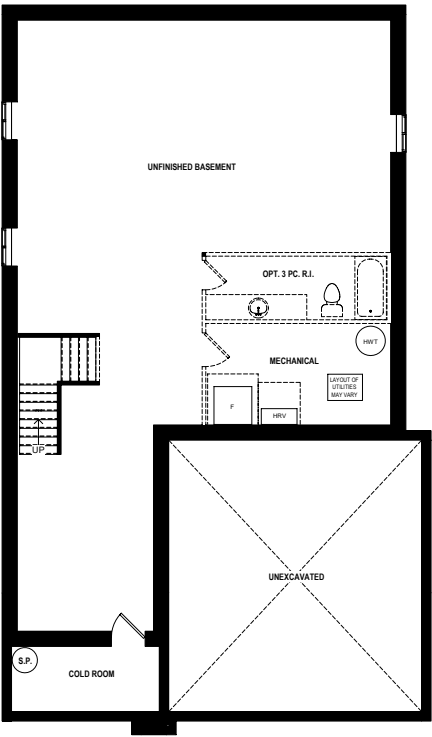
- 2,850 SQ.FT.
- 4 - 5 BED
- 2.5 BATH



MAIN FLOOR



SECOND FLOOR



BASEMENT

Modern | THE ROBIN

Prices, plans, elevations, grading, steps, dimensions, specifications/information and square footage are subject to change without any notice. Some features shown may be optional and available at an extra cost. Drawings are artist & designer's concept only and are subject to change as per offer, final selections and any adjustment required by OBC & City building/zoning departments. E. & O.E. 2021 Ridgeview Homes. All rights reserved. 28 JAN. 2021.



# FEATURES & FINISHES

A Higher Standard



9FT. CEILINGS ON MAIN FLOOR



ENGINEERED HARDWOOD OR LAMINATE  
IN GREAT ROOM



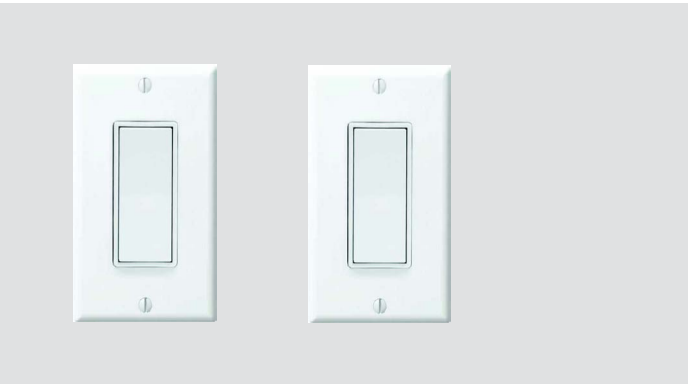
GRANITE COUNTERTOPS



CERAMIC TILE THROUGHOUT



GLASS EN-SUITE SHOWER



DECORA SWITCHES



HIGH-EFFICIENCY FURNACE/HEAT  
RECOVERY SYSTEM



EXTENDED BARTOP

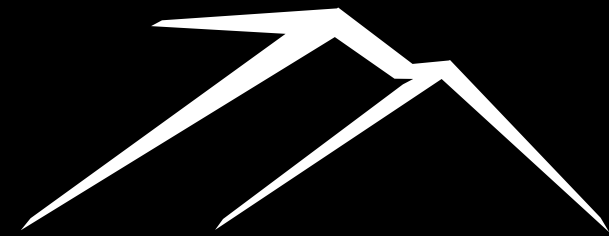


BASEMENT ROUGH-IN AS PER PLAN



AIR CONDITIONER INCLUDED

Prices, plans, elevations, grading, steps, dimensions, specifications/information and square footage are subject to change without any notice. Some features shown may be optional and available at an extra cost. Drawings are artist & designer's concept only and are subject to change as per offer, final selections and any adjustment required by OBC & City building/zoning departments. E. & O.E. 2021 Ridgeview Homes. All rights reserved. 28.JAN.2021.



# RIDGEVIEW HOMES

DESIGN. BUILD. ACHIEVE.

RIDGEVIEWHOMES.COM  
519-748-0087

## CONTACT OUR SALES AGENTS

Vong Realty Group

**VONGDEUANE KENNEDY**

Broker

519-579-4110

[vong@vongrealtygroup.com](mailto:vong@vongrealtygroup.com)

[vongrealtygroup.com](http://vongrealtygroup.com)

Royal LePage Wolle Realty

**SCOTT SNIDER**

Sales Representative

519-895-6700

[scottsnider@rogers.com](mailto:scottsnider@rogers.com)

[wollerealty.com](http://wollerealty.com)