

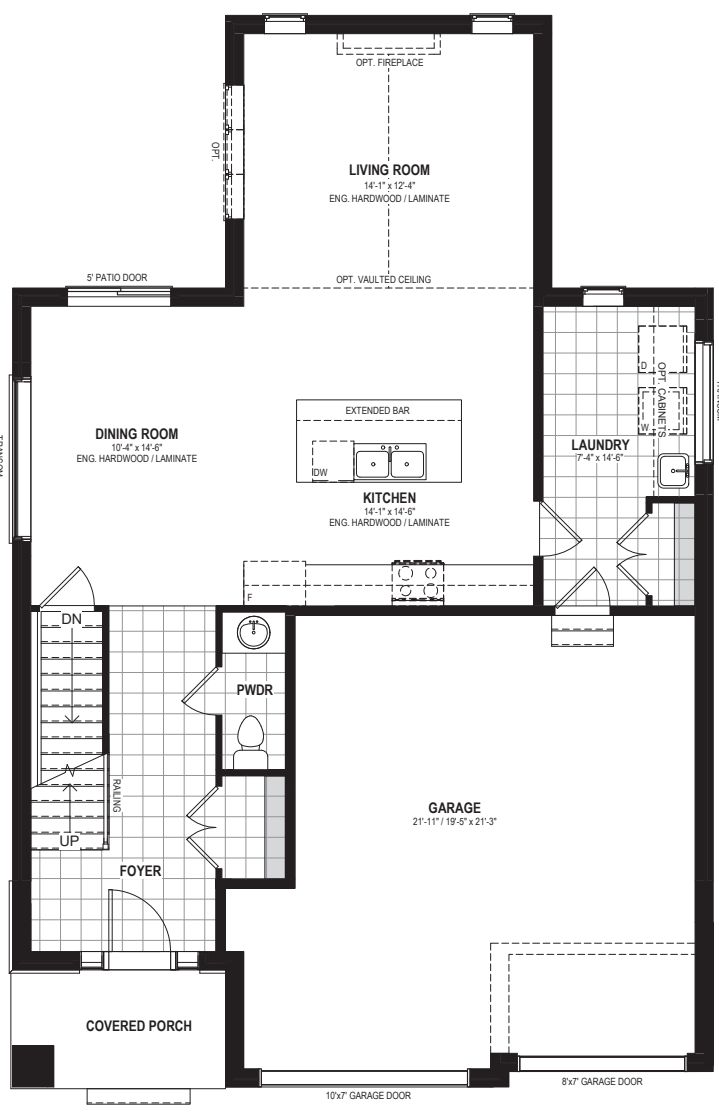


# URBAN FARMHOUSE ELEVATION

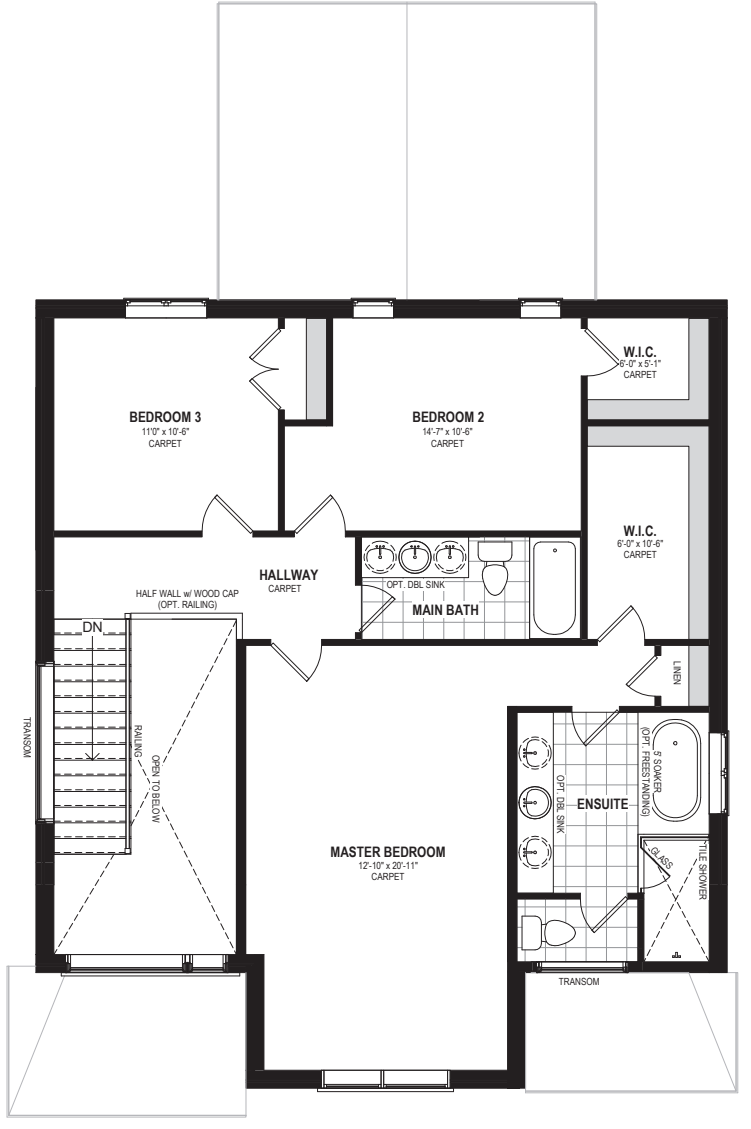


# THE ORIOLE 2,075 SQ.FT. 3 BEDROOM

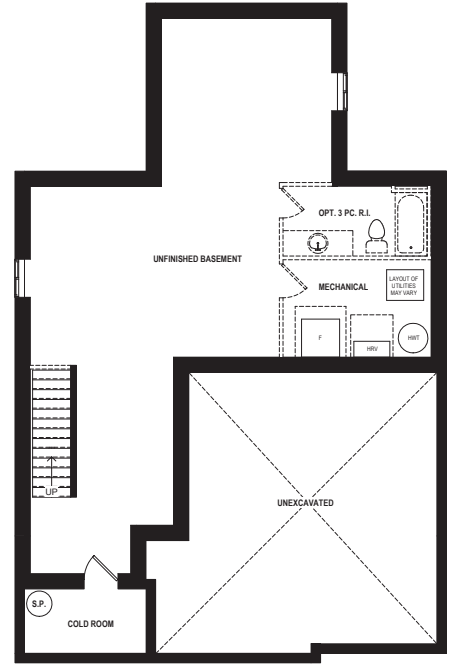
## MAIN FLOOR



## SECOND FLOOR



## BASEMENT





**RIDGEVIEW  
HOMES**  
DESIGN. BUILD. ACHIEVE.



**BLUE SPRINGS**  
Bloom in nature's simplicity

**CONTACT US**

<p><b>VONGDEUANE KENNEDY</b> Broker 519-579-4110 vong@vongrealtygroup.com vongrealtygroup.com</p>	<p><b>SCOTT SNIDER</b> Sales Representative 519-895-6700 scottsnider@rogers.com wollerealty.com</p>
---	---

Prices, plans, elevations, information, dimensions & specifications are subject to change without notice. Some features shown may be optional and available at an extra cost. Exterior colour package varies per block and may not match shown colours. Square footage may vary without notice. Drawings are artists concept only and are subject to change as per offer and final selections. E. & O.E. ©2020 Ridgeview homes. All rights reserved. 10.NOV.2020