



THE CABO

LOT 19 2,390 SQ.FT. 4 BEDS 3.5 BATHS

IN ADDITION + 1,100 SQ.FT. FINISHED
BASEMENT. TOTAL = 3,490 SQ.FT.

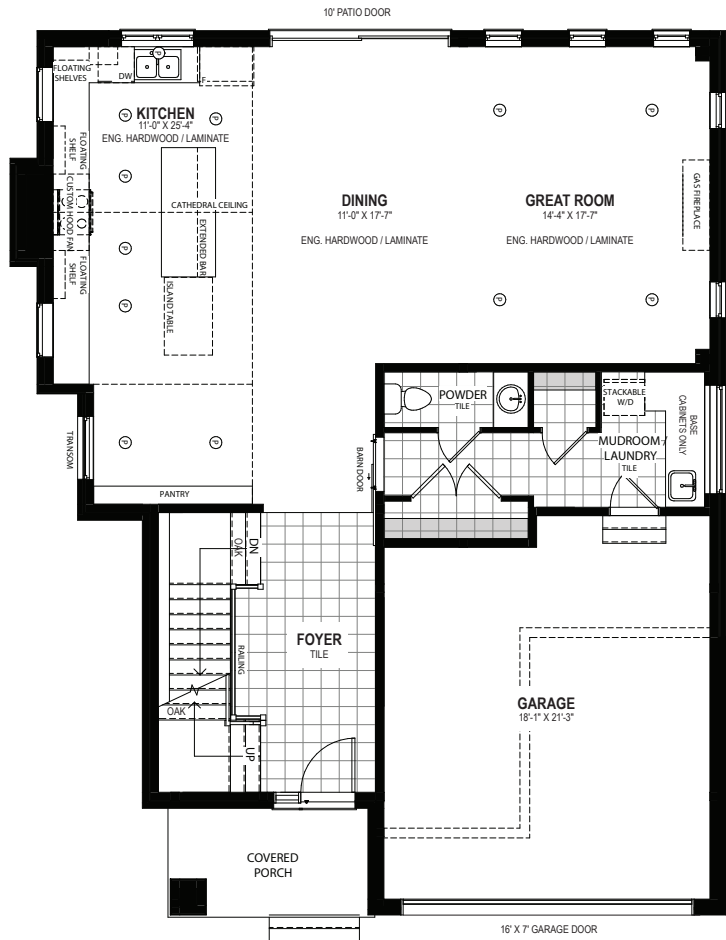
Prices, plans, elevations, grading, information, dimensions & specifications are subject to change without notice. Drawings may also be subject to change based on city bylaws and zoning requirements. Drawings are artist & designer's concept only and are subject to change as per offer, final selections and any adjustment required by OBC & City building/zoning departments. Square Footage may vary without notice. Actual usable floor space may vary from the stated floor area. Square Footage area includes open space and is subject to change without notice. Some features shown may be optional and available at an extra cost. E. & O.E. 2022 Ridgeview Homes. All rights reserved. 23 MAR 2022.



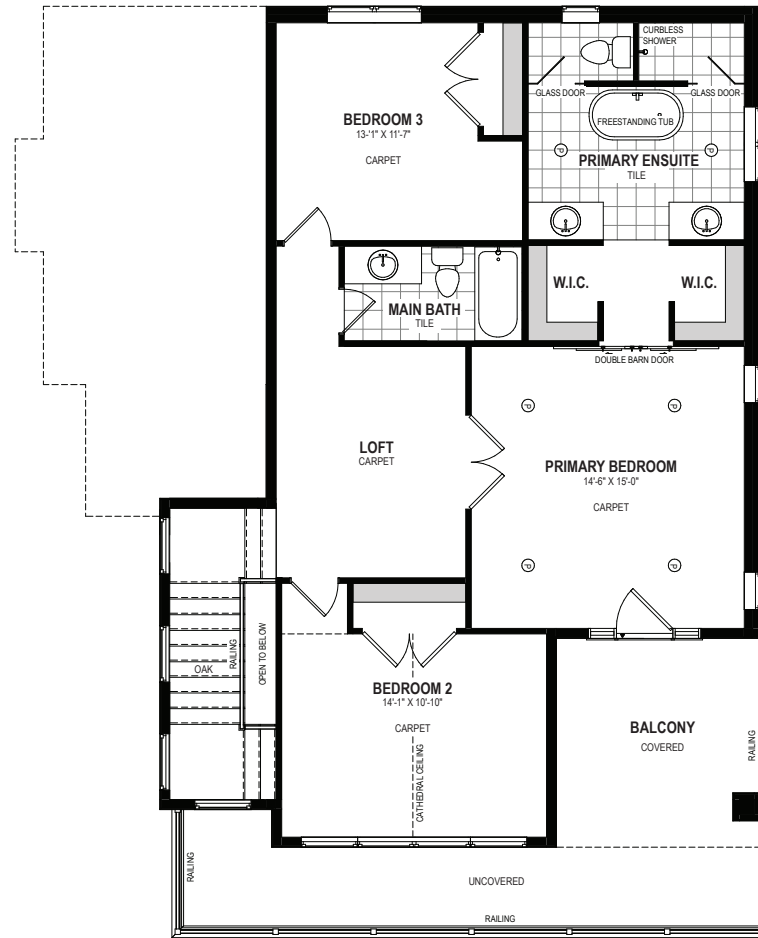
STONECLIFFE
AT DOON SOUTH



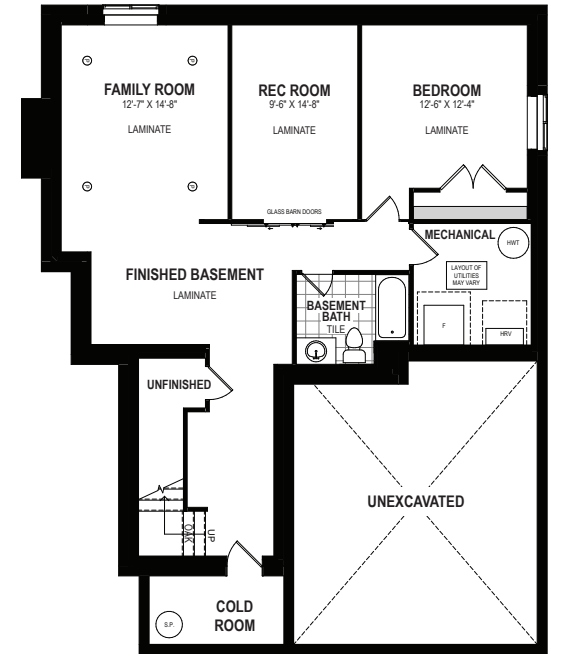
**RIDGEVIEW
HOMES**
DESIGN. BUILD. ACHIEVE.



MAIN FLOOR
1,240 SQ.FT



SECOND FLOOR
1,150 SQ.FT. (INC. 100 O.T.B.)



BASEMENT
1,100 SQ.FT.

THE CABO

LOT 19 2,390 SQ.FT. 4 BEDS 3.5 BATHS

IN ADDITION + 1,100 SQ.FT. FINISHED BASEMENT. TOTAL = 3,490 SQ.FT.

SALES CENTRE 519-885-8000

Prices, plans, elevations, grading, information, dimensions & specifications are subject to change without notice. Drawings may also be subject to change based on city bylaws and zoning requirements. Drawings are artist & designer's concept only and are subject to change as per offer, final selections and any adjustments required by OBC & City building/zoning departments. Square Footage may vary without notice. Actual usable floor space may vary from the stated floor area. Square Footage area includes open space and is subject to change without notice. Some features shown may be optional and available at an extra cost. E. & O.E. 2022 Ridgeview Homes. All rights reserved. 23 MAR 2022.

