



THE MITRE

LOT 18 2,975 SQ.FT. 3 BEDS + LOFT 2.5 BATHS

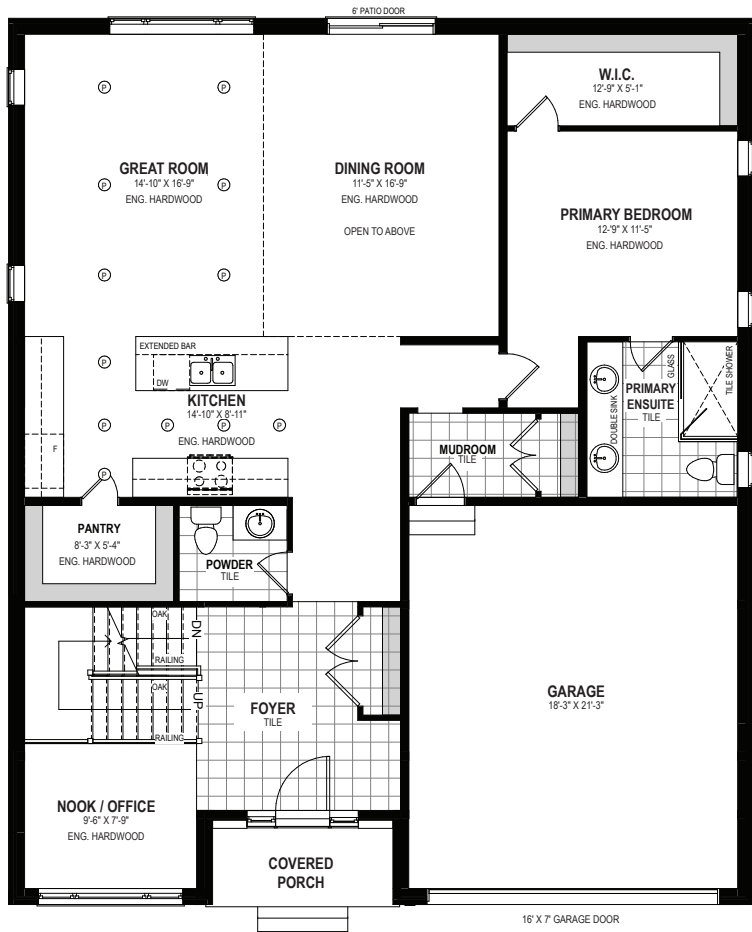
Prices, plans, elevations, grading, information, dimensions & specifications are subject to change without notice. Drawings may also be subject to change based on city bylaws and zoning requirements. Drawings are artist & designer's concept only and are subject to change as per offer, final selections and any adjustment required by OBC & City building/zoning departments. Square Footage may vary without notice. Actual usable floor space may vary from the stated floor area. Square Footage area includes open space and is subject to change without notice. Some features shown may be optional and available at an extra cost. E. & O.E. 2022 Ridgeview Homes. All rights reserved. 01 FEB 2022.



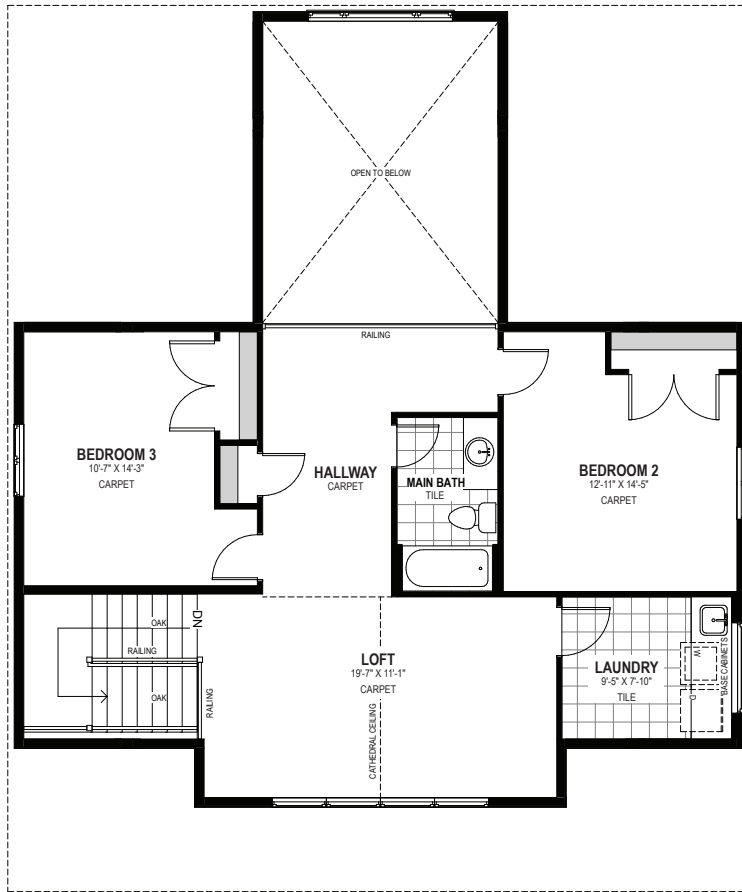
STONECLIFFE
AT DOON SOUTH



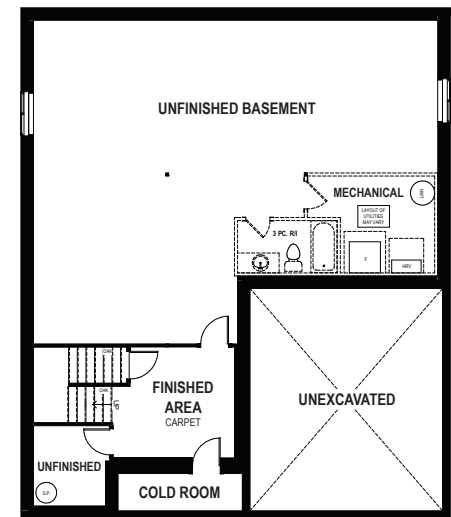
RIDGEVIEW
HOMES
DESIGN. BUILD. ACHIEVE.



MAIN FLOOR



SECOND FLOOR



BASEMENT

THE MITRE

SALES CENTRE 519-885-8000

LOT 18 2,975 SQ.FT. 3 BEDS + LOFT 2.5 BATHS

Prices, plans, elevations, grading, information, dimensions & specifications are subject to change without notice. Drawings may also be subject to change based on city bylaws and zoning requirements. Drawings are artist & designer's concept only and are subject to change as per offer, final selections and any adjustments required by OBC & City building/zoning departments. Square Footage may vary without notice. Actual usable floor space may vary from the stated floor area. Square Footage area includes open space and is subject to change without notice. Some features shown may be optional and available at an extra cost. E. & O.E. 2022 Ridgeview Homes. All rights reserved. 01 FEB 2022.

STONECLIFFE
AT DOON SOUTH

RIDGEVIEW HOMES
DESIGN. BUILD. ACHIEVE.